



Metchosin Muse

A N O N - P R O F I T C O M M U N I T Y P U B L I C A T I O N

Sheep Markings 101



Marked-up lambs ready to head out to the fields with their mommas. Lorraine Buchanan photo.

JOAN KEW

Spring is here, and that means many of Metchosin's fields are dotted with ewes and their newborn lambs. It's not unusual to see cars pulled over, their occupants standing at the fence to watch the goings-on in the field. Most of the lambs you'll see in Metchosin belong to Parry Bay Sheep Farm, and most of the people looking at them are probably thinking that the sheep farmers around here have an artistic bent.

I'm not saying the Buchanans aren't artsy, but there IS a method to their markings. The most obvious marks are the numbers: each animal has

a number on its side, and each ewe has the same number as its lambs – unless they're black and the number won't show anyway. They number the sheep so that when a lamb can't find its mother among the other sheep, or vice versa, it's easy for the farmer to reunite them. The colour of the numbers is pretty basic: when it changes, it means the paint ran out and they had to start on a new can.

So much for numbering – now onto the real art! If the ewe and lamb have a long stripe of colour down their backs, it means the ewe has a single lamb. For the Parry Bay sheep, having a single lamb is a luxury and is unusual. Last I

heard, they were up to 18 sets of quadruplets and three sets of quintuplets so far this year.

A dot on the back at the tail end indicates triplets. Sometimes triplets in the field start out as quads but the ewes can't normally feed that many, so the fourth is either fostered onto another ewe, or ends up in the bottle-feeding pen back at the farm. If you see a triplet ewe that only has two lambs, don't panic – sometimes even three is too many to feed, so one gets taken back to the farm for bottle feeding.

The Buchanans also keep some large wax crayons on hand for special markings. A "rainbow butt" (terminology heard on the farm!) just above the tail indicates that a ewe has received treatment, perhaps for signs of vitamin deficiency or a sore foot. A line down the forehead of a lamb indicates that it was born with an inverted eyelid (entropion), and although the problem is always fixed, they like to keep an eye on it to make sure it doesn't reinvert.

So, next time you head out to watch the gamboling lambs, keep in mind this crash course in sheep markings. That way, you can impress the tourists who drive out to Metchosin to see the sheep and the lilies at this time of year!



Assistant Arwyn Ferguson applies a number to a day-old lamb. The line on its head indicates entropion, which they'll keep an eye on once the lamb is in the field. Lorraine Buchanan photo.

Golf Development, Round Two?

The *Muse* has recently been apprised of a proposal for a Golf Course/Residential development that was to be brought to the Municipal Council immediately after the municipal elections in November. The plan was shelved, allegedly because the proponents were not convinced the new council would be as welcoming to the project as they had hoped.

After a bit of digging, Jerry "Hat-trick" Berry, a retired professional hockey player, was identified as the driving force behind the project. The *Muse* contacted Berry by phone and learned that the concept had, like a past proposal, a residential component to it – not the high-density housing of the earlier concept, but an adult-only, single-family dwelling development on the periphery of the championship golf course. "We knew anything that had anything other than single residences tied to it was dead in the water," Berry stated.

Given the decline in the popularity of golfing, with courses closing all over North America, we asked Berry how this course could be viable. "We decided to target a niche golfing market. Nude golfers. They're out there, and there are very few places they can play a round in the manner they enjoy. Of course, even on the west coast, winters are a bit chilly, so we figure the course will be clothing optional only between May and October."

So is the project dead? Berry was a bit coy, saying he and his backers are re-evaluating their options, but are not putting the project to bed completely yet. "I figure with them two greenies on the Council, this idea might just appeal to them," he said. "We were going to go non-chemical anyways, and adding another 'back to nature' feature might just turn the corner for them".

So there you go. We have no idea if this is going anywhere or not. And one more thing: the name of the proposed championship course? Bare Mountain, of course.

Egg Thefts Go Over Easy in Metchosin

Small farms in the area have reported dozens of egg thefts over the past few weeks. Metchosin residents are being warned to keep a closer eye on their chicken coops, which are often left unlocked. The thefts have occurred on farms that produce white eggs, although local residents whose hens lay a variety of coloured eggs have also complained about poaching.

Authorities have been scrambling to crack this case. "The egg thefts have been well done," said farmhand Benedict Custard, who admitted that he may have been pickled on scotch when eggs in his care disappeared. Locals speculate that recent outbreaks of avian influenza near the home of the Easter Bunny could be a contributing factor, but authorities say this is no yolk.



Theresa Kew checking for eggs.

Joking Aside ...

Corporal Brian Kerr, who provides the list of RCMP call-outs for the *Muse* (see page 15), notes that this has been *by far* the busiest month for reported crimes in Metchosin. We all need to take a proactive approach in preventing these crimes.

- Remember to lock your residence both when at home at night and when you are away.
- Remember to lock your vehicles at night and not to leave valuables in them.
- Communicate with your neighbours about suspicious activity.

Important Dates (for ongoing events, check back page for organizations' contact information)

Mar. 28 <i>The Dark Side of Chocolate</i> p. 2	Apr. 17 Talk and Walk: Using Native Plants in Your Home Garden p. 3
Apr. 1 Plants You'll Love p. 6	Apr. 19 Metchosin Foundation/AGM p. 7
Apr. 11-19: Consider the Lilies p. 10	Apr. 21 Fire Smarting Your Home p. 7
Apr. 13 Rough Voice Choir p. 10	Apr. 24 Band Wagon Night p. 11
Apr. 16 High-Flying Seniors: MCA Guest Speakers p. 13	Apr. 25 CRD Irrigation Workshop p. 11

Metchosin Muse

c/o E. Carlson, 4985 La Bonne Road, Victoria, BC V9C 4C5

EDITOR
Brian Domney, 250-474-3966
metmuse@shaw.ca

EDITOR EMERITUS
Jo Mitchell, 250-478-1671
jomitchell@shaw.ca

MUSE TEAM
Stevie Bahrey
Joan Bradley
Eileen Carlson
Joannie Challenger
Brian Domney
Laura Farquharson
Barrett Fullerton
Joan Gilbert
Brian Graham
Jessica Hedberg
Joan Kew
Peter Lewis
Jim MacPherson
Dauna Neveaux
Barb Sawatsky

ADVERTISING
Peter Lewis, 250-474-3260
petermlewis@shaw.ca

CLASSIFIEDS
Eileen Carlson, 250-478-1036
elcarlson@shaw.ca

ACCOUNTS
Eileen Carlson, 250-478-1036
elcarlson@shaw.ca

DESIGN AND LAYOUT
Joan Kew

**DISTRIBUTION
CO-ORDINATOR**
Barrett Fullerton

EVENTS metmuse@shaw.ca

CURRENT CIRCULATION: 2700

**SUBMISSION DEADLINE AND
HOW TO SEND COPY**
The 15th of each month. Please send copy as an email attachment using Microsoft Word, text or RTF to: metmuse@shaw.ca. Typewritten or handwritten copy is acceptable if you have no access to a computer. Do not send PDFs. Photos should be high resolution, i.e., not taken with phone or tablet. Leave hard copies of articles not sent via email in the *Muse* box at the Metchosin Country Store or fax to 250-483-5352. Please visit our website for more information: www.metchosinmuse.ca.

AD DEADLINE
The 15th of every month for month-end publication.

ABOUT THE MUSE
The *Metchosin Muse* is a local non-profit, arts, interests and activities publication, produced by the *Muse* team. The opinions expressed in articles are those of the authors, not the paper. The *Muse* endeavours to promote harmony and involvement in the community and aims to interest a broad cross-section of the residents of Metchosin and Becher Bay.

The *Muse* is delivered, free of charge, to every household in Metchosin. Additional copies are available at My-Chosen Café, Metchosin Country Store, the Community House, Happy Valley Store, The Broken Paddle Coffee Shop and Willow Wind Feed & Tack Store on Sooke Road. It is also available at the Juan de Fuca branch of the Victoria Public Library.

MAILING ADDRESS
c/o E. Carlson
4985 La Bonne Road
Victoria, BC V9C 4C5

On the web at www.metchosinmuse.ca

Visit our website! www.metchosinmuse.ca

The *Muse* website provides a quick way to access Metchosin's monthly newspaper, and it allows those with vision challenges to magnify the .pdf files to a comfortable reading size.

The current issue and issues from the past year are there, along with contact information and information for submissions, advertisers, and deadlines.

Muse Subscriptions

We can mail the *Muse* to you each month for \$25 a year if it is to be posted to a Canadian address. Please send your information and cheque to the Head of our Subscriptions Department:

Joan Bradley
10 Bradene Road
Victoria BC V9C 4B1
Tel: 250-478-3451

Or you can email us at
metmuse@shaw.ca



METCHOSIN MUSE AD RATES

Display Ad Sizes	1 Issue	2-5 Issues	6-12 Issues
Bus. Card (H)- 4"w X 2.5"h	\$47.00	\$42.00	\$38.00
Bus. Card (V)- 1 7/8"w X 5"h	\$47.00	\$42.00	\$38.00
2X4 - 4"w X 4"h	\$77.00	\$67.00	\$59.00
1/6 page - 4"w X 5"h	\$95.00	\$87.00	\$75.00
1/4 page - 4.9"w X 7.6"h	\$145.00	\$129.00	\$115.00
1/2 page - 10"w X 7.5"h	\$285.00	\$265.00	\$240.00
Insert 8.5" X 11" (supplied only)	\$259.00	per month	per month
Full Width Banner x 2"h	\$96.00	\$88.00	\$76.00
Full Page Ad (if available)	\$569.00	~ no additional taxes ~	

Discount on 2-5 and 6-12 issues. Full payment in advance of publication

Cost To Design Ad
First Time Ad Layout
and Design \$35.00
Submit Camera Ready ad N/C.
Full payment in advance.
For more information please
call Peter Lewis 474-3260.
petermlewis@shaw.ca

Classified Ads
25 words or less \$10
Deadline: 15th of each month.
Monthly payment
in advance. Please call
Eileen Carlson 250-478-1036.

Letters to the Editor

The *Metchosin Muse* welcomes letters to the editor, of not more than 200 words. Your letter may be edited for editorial style or length. Please email your letter to metmuse@shaw.ca, or leave it at the Metchosin Country Store. Please sign your letter. An address and telephone number are required but will not be published.

Congrats, One World

My seven-year-old granddaughter and I attended the matinee performance of the Pearson College *One World* show at the McPherson Playhouse on March 7. Although I leave the theatre every year telling myself that the shows cannot get any better, the 2015 performance was magic. The emcees, the energy, the costumes, the dances, songs and spoken word were all spell-binding and it is difficult to believe that the performers were not professional but were, indeed, young students from many lands. Throughout the performance, Cassandra kept whispering to me, "This one's my favourite, Nana. Is it your favourite, too? I thought the last dance was my favourite but now it's this one." Of special note to her was watching young Sarahi Perez Sanders, who is about Cassandra's age and the daughter of a teacher, taking part in "Mirror Devils" (Mask Dance). Walking back to our car after the show, Cassandra asked me, "Is it okay to say that I liked this show way better than *The Nutcracker*?" Then she asked, "Can we go to the show next year?" Yes, indeed, we certainly can. Congratulations to Pearson College students, Yoomi Kim, the very energetic musical director, and to everyone who participated to make this a spell-binding performance. – Barb Sawatsky

Thank You, Metchosin

On March 2, the Metchosin Community Hall was a buzz of activity, accompanied by the joyful music of Mbira Spirit – Amy and Tafadzwa Matamba's Zimbabwean Music for Peace, Love and Harmony. Laughter, dancing, face painting, snacking, and visiting abounded. In less than an hour, the over 80 adults and

children present were able to make 152 bath bundles. Each bundle contained a home-made card, socks, toothbrush, toothpaste, soap, Kleenex, and chocolates all wrapped up inside a towel and tied with a brightly coloured ribbon. When we ran out of towels we still had enough of everything else to make toiletry packets minus the towels for another 58 people.

Sincere thanks to the many of you who donated towels, socks, soap and toothbrushes. The ninth annual Bath Bundle event was a success and the bath program at Our Place Society in downtown Victoria has a total of 200 bath bundles or toiletry packets to give to those who are homeless and wanting to take advantage of the private bath program offered. Representatives from Our Place were most appreciative of all the donations.

This event was sponsored by the Baha'is of Metchosin and we wish to thank the Baha'i Communities in Westshore who assisted us by providing finger food snacks for those attending this event. Thank you too to each and every one who contributed to this event with special thanks to our corporate donors, Thrifty Foods, SuperStore, Babin Dentistry, Colwood Dental Clinic, Terra Pacifica Landscape and Design.

See you next year and let's see if we can make more than 200 bundles and dance up a storm! – Nan Hsieh

Community Potlucks

Did you know that on the last Thursday of the month, from 12:00 noon to 1:30 pm there, is a Community Potluck Lunch at the Community House?

There must be people out there in Metchosin who would like to attend but are hesitant to do so on their own. If you are interested, do phone Audrey Jenkins at 250-478-1352 and get more details.

You will be warmly greeted and made welcome.

Audrey Jenkins

Great Trail!

Special thanks to the members of the Parks and Trail Committee for the superb job they did in the design and construction of the Pearson College Trail between Pearson College Road and the Galloping Goose Trail. It surely must be the best trail in Metchosin. In spite of the heavy rain storms and the wetlands in the area, it remained dry throughout the winter; and the way the trail wanders through the woods makes it very appealing.

We are sure we speak for all those walkers (with and without dogs), horseback riders, and bikers who use this trail. In our experience, the neighbourhood parks and trails give people of diverse interests a place to meet and socialize, and contribute greatly to community building. Their value cannot be overestimated.

Bev Hall and Maurice Robinson

Correction

In the March issue of the *Muse* we incorrectly identified the owner of Custom Pro Exteriors Ltd., and outstanding citizen of Metchosin as Rezin Claycroft. The correct spelling of his name is Rezin Craycroft. Our sincere apologies, Rezin!

Editor's note

In anticipation of a flurry of letters expressing moral outrage about another golf course proposal, righteous indignation about nude golfers or hopping white rage about eggisential rabbits, please note that this issue has come out at the beginning of a special month of the year ...

Film Night at the Metchosin Community House

Dark Side of Chocolate (46 minutes)
Saturday (usually Fridays), March 28 at 7:00 pm

This film night promises to be different. Taylor Kennedy, chocolate maker, and owner of Sirene Chocolates in Victoria will facilitate it. Taylor promises to bring different types of raw cocoa beans in small bowls for us to sample – some from Madagascar, some from Ecuador (see sirenechocolate.com). Though we could spend an entire night discovering the who, what, when, and where of world chocolate making, Taylor will guide us into the controversy of child labour and trafficking on the chocolate plantations of the Ivory Coast.

It's a merciless film where hidden cameras expose the selling of children from Mali – who are ten to fifteen years old – to farmers in the Ivory Coast. It also exposes Nestle's turning a blind eye. It's upsetting to see children lured away from their families by traffickers, with the false promise of money for their family. Most children will never see their families again. Suggestions, comments, please contact Ric at ricnic2@shaw.ca.



SIRC Notes and News

ANNE RICHMOND

For this month's news I sat down with Colleen Brownlee, SIRC Coordinator, and Stephanie Dunlop, Fire Chief, in her dual capacities with the Metchosin Fire Department and the Emergency Program, to talk about some of the ways SIRC and the Emergency Program support seniors in the community – and the things that seniors, their friends and family can do to make that support even more effective.

First of all, if you have not already done so, please come to the regular monthly Emergency Preparedness talks being held at the Fire Hall, third Tuesday of the month, 7:00–9:00 pm. There is a wealth of information on different topics to do with personal and community safety and preparedness. If you are concerned about getting there and back, consider calling SIRC to arrange for a ride!

We talked about issues that may be of particular concern to some seniors in Metchosin – and potentially others – in situations of general or personal emergency. For example, you may have oxygen in your home. Or your neighbour may have mobility issues that could affect their ability to evacuate their home. These are all “special considerations” that can be vital information during an emergency, and where advance knowledge can improve the quality and effectiveness of the service your first responders provide. The Emergency Program website (<http://metchosinemergencyprogram.ca/>) has a spot for registering for notification, and you can add information about such special considerations there; or you can phone Stephanie and let her know. This information is kept totally confidential and is used only in cases of emergency.

In terms of emergency preparedness, seniors may or may not have thought about how they should prepare themselves. Of course, we are all ready to be evacuated within 30 minutes with our “grab and go” kit, and we are prepared to be in our homes unsupported for 72 hours (if we are not, there is lots of information about how to be ready!). Seniors may also want to think

about issues such as: adequate supply of medicines; mobility aids; batteries for hearing aids; and carriers and supplies for pets. If you have pets but no carriers, this is something to let the Emergency Program know in advance as they are able to provide carriers for evacuation.

Another part of emergency preparedness is the POD program, where immediate neighbours meet and work out strategies for sharing information and working together when an emergency strikes. Each POD determines how they will work together – a key element in developing community resilience and mutual assistance. If you are part of a POD, you might want to consider if you have taken seniors' issues into account. If you are not, you might want to contact Mary Gidney, Director of the POD program at pod@metchosinemergencyprogram.ca, to join or start one with your neighbours.

Metchosinites, and especially senior Metchosin residents, are a notoriously self-sufficient bunch. Many people are hesitant to contact the fire department or emergency services because they “don't want to make a fuss” or feel “it's not really serious.” But as Stephanie emphasized, it's far better to be safe than sorry. If you are sure it's an emergency, then 9-1-1 is the number to call. That will mean an immediate response, including lights and sirens. But if you are not sure that it's an emergency, then there is a 24-hour number to call: 250-478-7770. That number will give you someone to talk to – day or night – and is absolutely the best thing to do if you are worried about something or even have a question. And here's where the link to SIRC comes in.

Some of those non-urgent questions may be just the thing that SIRC can help with, and you'll be referred there. Or in a case where there has been an emergency, you can ask SIRC to follow up – for example to check on your spouse or pet left at home if you went to hospital, or organize a driver for a hospital visit. This is how SIRC can act as a

“friends and family” resource in the community if you need some help after an emergency situation. SIRC's “friends and family” role isn't restricted to emergency situations either. SIRC offers drop-ins, phone service and home visits for Metchosin seniors – scheduled and as needed. Staying connected is an important part of staying healthy and prepared for emergencies!

A more formal program called Keep in Touch (KIT) is offered through the West Shore RCMP. It is aimed at seniors living alone with limited local support from friends and family. After registration with the RCMP, regular check-in calls from volunteers will be set up. More details about the program are available at SIRC or you can contact the KIT office at 250-391-3327.

As always, you are encouraged to drop by the centre, located on the ground floor of the old school building, 4495 Happy Valley Road, Phone: 250-478-5150. We are open Tuesday and Thursday, 10:00 am–3:00 pm, Wednesday and Friday 1:00–3:00 pm.

Upcoming events for April include the regular “Vintage Group” meeting at the centre on Tuesday mornings between 10:30 am and noon, and “Geeks and Geezers,” Tuesdays 4:15–5:30 pm, where you can bring any and all questions related to your tech toys. It's helpful if you call to let us know you are coming so we can be sure to have enough “geeks” on hand! We can also arrange a session at a time that suits you better – please let us know. Look for a session on “Refreshing my driving skills and what I need to know.” This presentation will be taking place later in April. We are also looking for input and ideas to help us plan some outings for seniors in and about Metchosin. How about a tour of Metchosin gardens, or a picnic at Tower Point? There are many ideas out there that we would like to hear about so planning can get underway.

Last but not least, we are now accepting membership renewals – so drop by the office or look for the renewal form on our website at www.metchosin seniors.ca.

TALK AND WALK

Unless otherwise stated, talks are at 7:00 pm at the Municipal Hall, 4450 Happy Valley Road, located behind the Fire Hall.



Strawberry flowers. Photo by Moralea Milne

USING NATIVE PLANTS IN YOUR HOME GARDEN WITH JAMES AND KRISTEN MISKELLY Friday, April 17 at 7:00 pm

Kristen and James Miskelly will be here to talk about which native plants to use in your home garden, and about the benefits of doing so! They started a native plant nursery in 2013, and will share some highlights from the past couple of years. Kristen and James are both biologists passionate about local ecosystems, restoration, conservation, and native plants, of course! James works mostly with rare species, ecological restoration, and entomology. Kristen is the nursery manager and lead grower and also works as a contract botanist. Visit their website: http://saanichnativeplants.com/Plant_selection.html

MARINE MAMMALS OF BC: OUR 75th TALK AND WALK! Friday, May 22 at 7:00 pm

Dr. John K.B. Ford is head of the Cetacean Research Program at the Pacific Biological Station (Fisheries and Oceans Canada) in Nanaimo. He has studied cetaceans in BC waters since 1977, especially killer whales, and has published widely on the subject. His recent focus has been on the conservation status of cetacean species at risk in BC. Dr. Ford has recently authored a new book examining BC's rich and stunning variety of mammals that live in coastal waters for the Royal BC Museum's handbook series.

Friday, June 12: Fifth Annual BioBlitz, topic TBA Saturday, June 13: BIOBLITZ!! Fun!

Contact moraleamilne@gmail.com for further information about these programs.



Ewes and lambs enjoying breakfast. Two of the ewes have a long stripe, indicating that they each have just one lamb (see p. 1). The lambs are also marked, but not visible here. Lorraine Buchanan photo.

get inspired

time to relax
space to connect
freedom to change



Iyengar Yoga in the Village

offering instruction for everyone – all ages, all levels, from gentle restorative to fitness cardio flow yoga

contact Suzanne
phone 778-967-2952
email metchosinyogastudio@gmail.com
www.westshoremetchosinyoga.com
Facebook @ Westshore Metchosin Yoga Studio



Heritage Committee Update

GAERT LINNAEA, HERITAGE ADVISORY SELECT COMMITTEE CHAIR

The Metchosin Heritage Committee is looking for recent photographs, whether digital or the old fashioned printed-on-cardstock type, which are district or heritage related, in order to copy them for the Heritage Archives.

It became apparent to the Heritage Committee while putting together a heritage committee display photo album for the district's recent 30th anniversary celebration, that there are very few photos in our archives since about 1990. Since we are now in the digital age, and most photos are filed in our cameras and laptops, the Heritage Committee is compiling for the archives, some more recent district- and heritage-related photographs. Please look, and if you have any, we would love to copy them for this purpose. Please email to the Heritage Committee at linnaea1@telus.net.

SUMMER CEMETERY TOUR

Mark your calendars as there will be a summer Cemetery Tour at St Mary the Virgin Church on Sunday, August 16, from 2:00 to 5:00 pm. This

tour provides the public with an opportunity to learn more about the history of pioneer families who settled on farm lands in the early years of Metchosin. The knowledgeable cemetery custodians will be on hand to guide you through the graveyard and will be happy to answer your questions to the best of their ability. Members of the Heritage Committee and the Metchosin Museum Society will also be there and homemade goodies and tea will be served in the Parish Hall (used by the Metchosin Preschool). We are pleased to have outdoor harp music provided by Allison Marshall.

We suggest that you plan to visit the Pioneer Barn Museum and/or School Museum during their late spring and summer hours on Sunday from 11:00 am to 2:00 pm prior to the tour, to familiarize yourself with some of this history.

If you have any queries regarding this or other heritage matters, please call me at 250-381-5752 or send an email to linnaea1@telus.net.

Inspirations

CHARMAINE WELCH

The stories I write are true stories, generally based on my personal experiences. These two stories were inspired by a couple of colourful characters who were the main protagonists.

The critter in the first story lives to tell the tale, but the second creature doesn't. Tender hearted readers should just peruse the first tale.

My friend Amanda was leaving her parents house after a pleasant visit. Looking at the clock, she said her farewells and headed for the front door. Noticing one of her shoes was missing, she knew the teeny Yorkie who ruled the house had taken it to her lair and was holding it hostage. This was a common occurrence, but Amanda didn't have time to play "keep away" today. Several futile efforts to separate dog and shoe ensued, as the four-pound dynamo had a death grip on her expensive footwear.

Glancing around, inspiration struck and Amanda sprang into action. Scooping up dog and attached shoe, she moved quickly to the chest freezer, depositing both canine and shoe into its frozen depths.

Slamming shut the freezer door, Amanda shouted loud enough for the quickly frosting pup to hear, "Ratty, you aren't coming out till I get my shoe!"

It took thirty seconds for the rapidly cooling Ratty to relinquish her cold treasure.

Amanda never again had shoe wars with the diminutive dog. I believe the pup went off shoes entirely after that chilling experience.

My second tale comes from Rita, the proprietor from the Reuse and Redo Store in Ucluelet. Having just met her, I was delighted to hear her chilling story. Chilling in more ways than you might expect.

A friend of Rita's, knowing she was an adventurous and creative cook, phoned asking if she would like an octopus he had just caught. They agreed he would deliver it early next morning to her front porch.

Upon rising, Rita carried the green garbage bag she found from the assigned drop spot into the kitchen to have a look at her sea-born bounty. Unpending the bag into the sink, she was horrified to find the ten-pound octopus was ALIVE! She certainly wasn't prepared to do hand to hand to arm to arm to arm to arm combat with the now lively creature, ecstatic at having been released from his plastic bag prison.

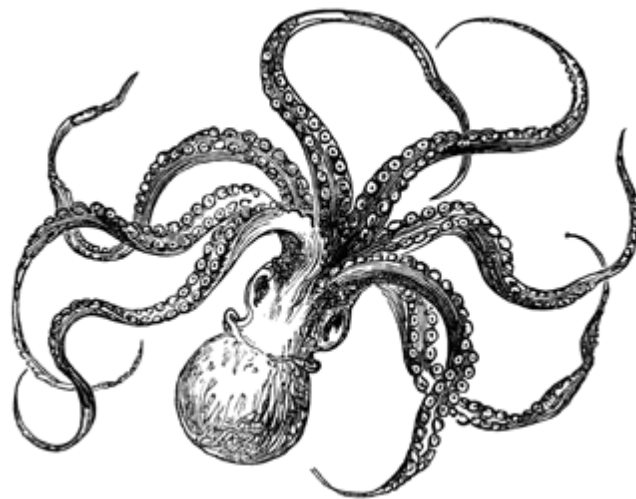
Yikes! With the children soon to be mobbing the kitchen with their morning enthusiasm, Rita had to do something and quick. A scary and slimy attempt to return the octopod to his garbage bag jail failed.

Grabbing a large knife, Rita chopped ineffectually at its appendages. This wasn't slowing down our hapless sea creature in the least. Realizing tougher measures were needed, Rita cast about the kitchen for inspiration. Much like my friend Amanda, she spied the freezer.

She propped the lid open and gathered the future dinner main course onto a cookie sheet and into the deep freeze.

This probably was not the most humane way to dispatch the unfortunate cephalopod, but certainly less traumatic than being slowly hacked to death in front of the small children.

Inspiration. You never know when you will need it.



NUMA FARMS NURSERY

THE FOUNDATION OF YOUR LANDSCAPE

THE BEST IN TREES & SHRUBS

QUALITY, SIZE, SELECTION...

Open Tues.-Sat. 8:30 am-5 pm; Mon. by appointment only. Closed Sun.
3459 Luxton Road, Langford, BC • Tel. 250-474-6005 • numafarms@shaw.ca

BBB Torch Award Winner - Community Service
Winner LCT Magazine Global Operator of the Year

Mention this ad and receive 10% off
a regular priced Wine Tour for Two (or more)

www.lalimo.ca info@lalimo.ca

250-391-9000

Randall Garrison, MP

ESQUIMALT-
JUAN DE FUCA

Constituency office is now open to serve constituents:

A2-100 Aldersmith Place
Victoria V9A 7M8

10am-4pm, Monday-Thursday
or by appointment

T: 250-405-6550
E: Randall.Garrison@parl.gc.ca
F: 250-405-6554

We are here to assist constituents
with Federal government
programs and services.

COUNCIL NEWS

APRIL 2015

FIVE YEAR FINANCIAL PLAN 2015-2019 AND 2015 PROPERTY TAXES

Metchosin Council is proposing to increase municipal property taxes by 1.9%. Both the Five Year Financial Plan 2015-2019 Bylaw and the 2015 Tax Rate Bylaw drafts are scheduled to be on the Council Meeting agenda on April 27.

COMMUNITY TRAILS

Metchosin has 18 km of multi-use trails throughout the municipality, so why not put on your hiking shoes and explore your community? You can find a trail map and trail descriptions on the *Parks and Recreation* page at www.metchosin.ca under Community.

NOTICE OF BLASTING - DEPARTMENT OF NATIONAL DEFENSE (DND), CFB ESQUIMALT, CANADIAN FORCES AMMUNITION DEPOT (CFAD)

Please note that the District tries to put every notice of blasting it receives on the official District website for residents information. www.metchosin.ca

COUNCIL SEEKS ADVISORY COMMITTEE VOLUNTEERS - HEALTHY COMMUNITY ADVISORY SELECT COMMITTEE

Metchosin's Healthy Communities Advisory Committee (HCAC) is in need of new volunteers. The purpose of the committee is to support community activities that seek improvements in all those aspects of living in Metchosin which reflect on our health, well-being and happiness while strengthening our sense of community. If you're interested, please submit a letter of interest addressed to Mayor and Council to the Municipal Hall.

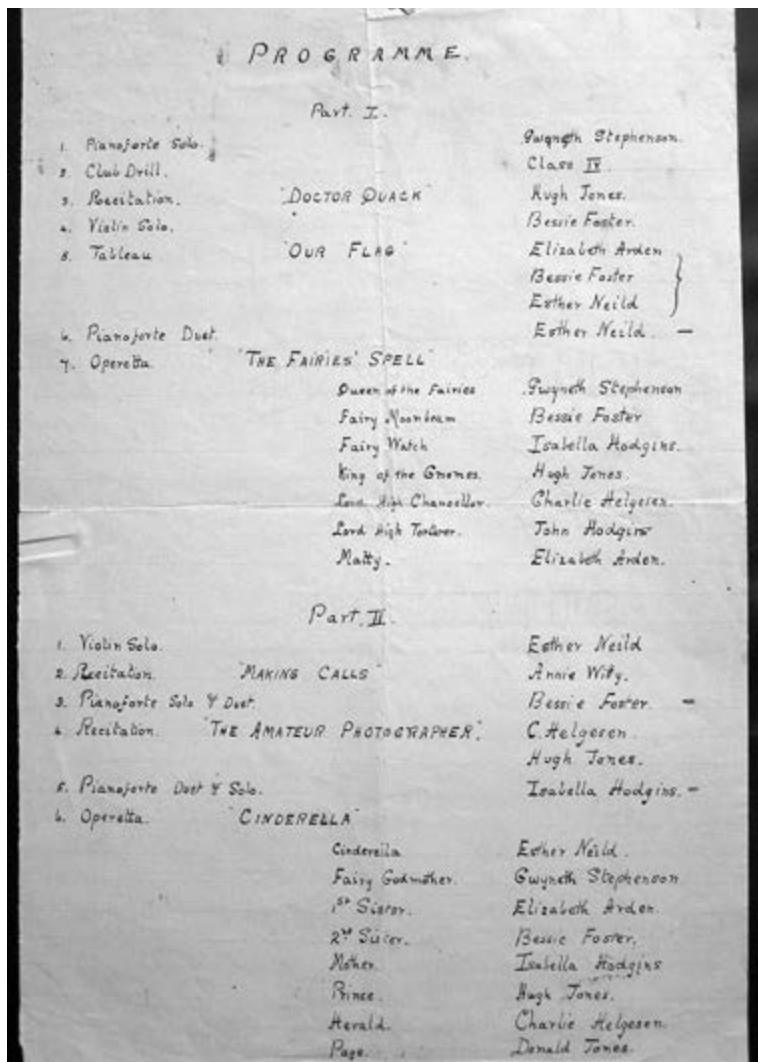
IS YOUR CIVIC ADDRESS VISIBLE?

Help emergency services find your home in the dark months of winter by making your civic address sign visible from the roadway. The best signs have large reflective numbers. Be sure that trees, brush, snow and other obstructions are cleared away.

Metchosin Municipal Hall | www.metchosin.ca | 250-474-3167 | info@metchosin.ca

Just an Old Sheet of Foolscap

MARGARET ROPER, METCHOSIN SCHOOL MUSEUM



Left: the Programme; above: the Class of 1908. Photos from the School Museum archives

There are so many treasures awaiting me at the Metchosin School Museum. I am in the process of organizing all the paper items that have been collected through the years. Carefully stored in archival quality sleeves and placed into binders, they patiently wait to be indexed. Sounds like a boring task, doesn't it? Not to me.

The first page I must record is what looks like a sheet of lined foolscap filled with beautiful neat printing. Across the top is the title: "PROGRAMME." The spelling was

my first clue that this was an old document. The programme was for a concert held in the old Metchosin Hall. A note attached to the back of the document says that the performance took place on a raised platform with acetylene lamps as footlights.

It is a musical program which also included a few recitations such as "Doctor Quack" by Hugh Jones and "The Amateur Photographer" by Charlie Helgeson. Bessie Foster played a violin solo. Two operettas were then performed. The first was *The*

Fairies' Spell. Gwyneth Stephenson played the Queen of the Fairies and John Hodgins was the villainous Lord High Torturer. That sounds exciting! The final operetta was *Cinderella* with Esther Neild and Hugh Jones singing the leading parts.

I looked for these children in the Metchosin school photo collection. We don't have every single year, but I found many of the event participants in this photo taken in 1908.

You see, it is not just an old sheet of foolscap.

Law and Order – Metchosin Style

JOHNNY CARLINE

The *Muse* has many wonderful articles which I look forward to every month. But, and this may surprise you, none more than the RCMP call-outs feature. It helps remind me of what kind of community I have come to.

Up until three years ago, I lived in an inner Metro Vancouver suburb. It was a nice neighbourhood and a nice community. But in my time there we were burgled once, had my car stolen twice, had my car's contents stolen once, and I was in two minor car crashes. I dutifully reported these to the police (which as it happened, was not the RCMP). Each time I was politely given a file number over the phone "for insurance purposes" and on no occasion did any police officer come to investigate my case.

Compare that with the Metchosin RCMP call-outs. Thefts are investigated, erratic driving is investigated, abandoned tents are investigated, and even people having a nap in their car are investigated. It could be because anything more "criminal" rarely happens here, but I prefer to think of it as a police force sharing the observant and caring values of the community. If the community observes something out of the ordinary, the police check it out to make sure everything is okay.

And then you get the occasional gem, as in the March edition, where the following entry appeared: "Complaint of suspicious person, located and found to be a Stats Canada employee." Surely

this was a case for Agatha Christie's Miss Marple!

It has the suggestion of a possible crime – "suspicious person" – and a clue to the resolution of the case – "turned out to be a Stats Canada employee." But, as in the best mystery stories, what the precise connection is between the mystery and its solution is left for the reader to work out.

Are we meant, for example, to infer that a Stats Canada employee is by his very nature suspicious? Yes, I know there was no evidence offered as to gender, but I am from that era when men might be suspicious but ladies were simply intriguing. But if someone stopped you in the street and demanded to know your age, sex, occupation and ethnic origin, you would probably find that a little suspicious. Yet Stats Canada employees do something like that for a living! But no, that seems too harsh.

Perhaps we are meant to infer that the man was diligently carrying out his duty. For example, as a Stats Can man he would know for certain that the average Canadian family size is two point nine. My wife and I are pretty average, but there are just the two of us. So it would scarcely be surprising to find him peering under the fir tree or poking about in the broom looking for the missing point nine.

Then again, perhaps he is a preservationist, grieving for the loss of the long form census. He could well have been rooting about in recycling

boxes looking for a carelessly discarded but increasingly rare long form. Totally understandable. Even praiseworthy.

Maybe he was just double checking that Metchosin's population is really four thousand nine hundred and something and not five thousand, the level at which the province could start passing some policing costs onto us.

But, for me, there was a vital clue missing in the RCMP report: was he or was he not a member of the MCA? If he was, then I am sure he was an upstanding citizen just doing his community duty and should have been immediately released with an apology and even a commendation.

On the other hand, if he was prowling about and was not even a member of Metchosin's own community association ... well, how suspicious is that! Lock him up, I say, and don't let him out until he has paid at least \$15 if he wants to be considered upstanding for more than a year! Now that is what I call getting tough on law and order.

Not so tough, you say? \$15 is a trivial amount? Well, perhaps you have a point. But \$15 buys you an MCA membership valid until July, 2016! And as we agree that it is a trivial amount, perhaps you could phone Heather at the MCA (250-478-5155) and become a member right away. Is it insurance against the risk of being thought a suspicious person? Who knows? That might be yet another great reason to join the MCA.

Tell them you saw it in the *Muse*!

Bella Yoga Studio

Yoga in the Neighbourhood - Duke Rd W.

Yoga For All! Hatha Yoga! All Levels

Curvy Yoga* Ayurveda*

Yogalites* Workshops.

Beginners Yoga & All Levels Welcome.

Beautiful - Fun - Safe - Peaceful - Explore

Wellness - Enjoy - Release - Love

Beginners Yoga! All Levels

Mindful Moments - Come Explore

Hatha Yoga - & Move your body!



www.Bellayoga.ca

Georgia 250-391-0497 • Email georgia@bellayoga.ca



John Horgan, MLA
Juan de Fuca

Standing up
for our Rural
Communities

Please contact my
office if you need help
with any provincial
government issue.



M-F 10am-4pm

#122-2806 Jacklin Rd.
Victoria, BC V9B 5A4

T: 250-391-2801

john.horgan.mla
@leg.bc.ca

www.johnhorganmla.ca

Jeff Is Back! – with Plants You'll Love

JUDITH VAN MANEN, METCHOSIN GARDEN CLUB

Plants You'll Love

Wednesday, April 1
7:30 pm at the Metchosin
Community House,
4430 Happy Valley Road

If you missed the February meeting, no worries: Jeff is back. And if you have never heard Jeff de Jong speak with passion of plants, trees and flowers, or seen his amazingly seductive botanical photography, you owe it to yourself to come to the Garden Club meeting on Wednesday evening, April 1 at the Metchosin Community House. No, this is not an April 1 joke, though you will be delighted by the humour that Jeff de Jong weaves through his eloquent presentations.

We have been fortunate indeed to feature Jeff de Jong for the last number of years as a celebrated speaker. He never fails to produce and present in his peerless and inimitable style an original talk, especially designed for Metchosin gardeners. But it is also enjoyable for people like my husband who may consent to cut the lawn but who leaves the gardening to me. Now that spring has sprung, cherry trees are blooming, buds are unfolding, and tulips are peeking through and rising tall, you want to tune your senses to nature's sensual beauty.

Artistically themed, Jeff's PowerPoint presentation is entitled *Plants You'll Love*. So if you were planning to watch a Netflix movie on Wednesday evening, then turn your set off; if you were thinking to read a book then mark the page and close it; and if you had promised to bake muffins for your loved ones, then say "sorry" and postpone the baking to the next evening. Honestly, you do not want to miss this special event. As well, you can



Jeff de Jong

participate for a loonie in the evening raffle draw, and at the conclusion of Jeff's talk, join others in friendly chats while munching on cookies and sipping tea or coffee.

Jeff de Jong is a professional horticulturist who spent many years teaching horticulture at Olds College in Alberta. Later, when he relocated to Victoria, he became an instructor in the Master Gardener Program at the Pacific Horticultural Institute and has offered countless courses for gardening groups and organizations throughout the province. Jeff has won several awards for his innovative garden designs so it is not surprising that he also writes articles for several gardening magazines including the *Canadian Gardener*.

As a popular radio broadcaster, he can be heard every Sunday morning from 10:00 am to 12:00 noon on C-FAX 1070 AM on the program "Gardening 101."

Jeff de Jong also leads special garden tours to New Zealand, Europe, and South Africa.

Please, don't miss our highly informative and most entertaining speaker of all time at Metchosin Community House, 4430 Happy Valley Road, on Wednesday evening, April 1 at 7:30 pm. See you there!



Lynda's Lore

WITH LYNDA DOWLING

Your Garden Orchestra

LYNDA DOWLING

Can you hear it? A gentle spring tide of sound beginning first with a few brave singing frogs. Freshen up your hummingbird feeders now. The faithful males await their wives and the territorial zinging sound of dive bombing will also return! And, as much as the seasonal orchestra of blooms that begins now for our eyes, and extra early this year by human calendars, so do the sounds of spring begin for our ears with Mr. Robin's trills. So as you plan your favourite tastes and flowers of the season to come, add in a few extras for your garden companions – birds, hummers, all varieties of bees and silent drifting butterflies.

You will be pleasantly surprised to know that most of these visitors don't require the newest exotic ruffled, and possibly pricey, 2015 plant tempting introductions. Hummingbirds want flowers with deep throats of nectar; most bees want "plain Jane" open-disked flowers to nuzzle their noses, (properly called proboscises), into nectar rich centres. Butterflies want landing pads as they flit from flower station to station. And then, not forgetting the native beneficial bugs – they want your weeds! (Another time these garden buddies are worth a whole other article.)

Herbs can be an easy start to all these wild garden visitors' requests starting with traditional thyme, rosemary, oreganos and marjoram, savory, sages, sorrel and mints. Add in the official edible list of herbal flowers like borage, calendula, coriander, chamomile, chives, dill, pansy, viola, bergamot, nasturtium and agastache or anise hyssop.

In fact most blooms of any common culinary herbs you use are, yes, edible to us AND very useful for nectar and pollen "eaters." So, you may already have a jump start on your list of desired "Orchestra" planting!

Spring is a great time for tulips; also sweet violet, bleeding heart, columbine, fragrant azalea, foxglove, dianthus, sweet william and sweet alyssum, alstroemeria, clarkia, cosmos, fuchsia, nicotiana, petunia, daylily, roses, phlox, zinnia, sunflower, snapdragon, penstemon, common yarrow, tagetes, marigold and even scarlet runner bean flowers and strawberry blossoms in the veggie patch! Add a vine or two like passiflora, honeysuckle, wisteria or ecremocarpus – an easy to grow "Chilean Glory vine" I treat as a half-hardy annual. There is a huge tree and shrub list that begins in the orchard with apples, pears or plums then moves into your perennial border plantings; with the familiar buddleia or "Butterfly bush," mock orange, both kinds of lilac, common and California ceanothus and on to, perhaps new to you, koeleruteria or "Golden rain tree," a lovely late blooming nectar treat, and arbutus unedo or the "Strawberry tree." I have seen hummers dropping in to dine on an arbutus unedo in a big urn on a rooftop garden, nine floors up!

As the season rolls on, the planting list only gets fatter and I've probably missed quite a few. I am hoping you can fit a couple more of these easily found plants and shrubs listed above into your 2015 dream garden.

All flowers and blooms aside, for Swallowtail butterflies do include angelica, fennel and any parsley, flat or curly for them to lay their tiny eggs on the foliage and munch away as they hatch and grow. The resulting caterpillars are unmistakable: bold lime green, yellow and black "eyed" alien and BIG just before they pupate. You won't regret turning a blind eye on the foliage damage for the next generation of adults ethereally drifting through your yard, and your host herb plants will recover – I promise!

One last suggestion – please leave your overwintered greens like kale, broccoli, swiss chard and such, even into the raggedy stage, for the nectar of their very early spring blooms for all your garden winged visitors to feast on.

For the last couple of seasons I have not rototilled my veggie patch and miss my accompanying Brewers Blackbird that used to do their own rototilling in my wake. Robins now follow my leaf mulch raking off instead. Fat robins!

In mid July when my lavender fields bloom I invite visitors to lay between the rows; leaving noses open, yet closing eyes and letting the bees sing to them! Similarly, when my 25-year-old Linden tree blooms on the driveway, I pause in my rush to get things done and listen for the world's largest bee orchestra, numbered in the thousands; no instruments required!

I wish I had wings to join them.



Lynda listening to the orchestra. (The ground is much warmer in July!) Photo by Mike Dowling



leSoleil
Jewellers est. 1976

in Metchosin at 1070 Brookview Drive
Custom Design is Our Specialty

lesoleiljewellers.com

250.388.5162



Sure Wire Electrical (1979) Ltd.

ELECTRICAL CONTRACTORS
Service Calls - Day and Night

DAVE RIGBY
250-478-3228 Tel/Fax
250-389-6932 Pager

815 Tiswilde Road
Victoria, B.C.
V9C 4E8

The Metchosin Foundation 2014-2015

CAROL CARMEN

The Metchosin Foundation (MF) has invited stellar speaker Dr. Briony Penn to be our special guest on the occasion of our fifth Annual General Meeting on April 19, highlighting the “healthy environment” side of the foundation’s mandate. Dr. Penn is an award-winning naturalist, scientist, environmentalist and educator. We are eager to hear her thoughts about the Pacific Rim in general and Metchosin in particular.

Guest speakers in past years have included nature artist Robert Bateman, Al Etmanski of the PLAN Institute, Bob McDonald of CBC’s “Quirks and Quarks,” Ancient Forest Alliance activists and photographers TJ Watt and Ken Wu, and Jack Knox of the *Times Colonist*. Each of these leaders has brought their particular experiences and perspective to offer ideas and insights to our community and environmental challenges in Metchosin.

The activities of MF continue to expand in number and in scope. Landowners interested in preserving the natural character of their properties on this unique area of the Pacific Rim are increasingly turning to a legal tool called a Conservation

Covenant. MF is currently working with landowners and the Habitat Acquisition Trust (HAT) to protect these globally at-risk lands for future generations.

In June of last year, Metchosin became a hub of scientific activity as a crew of biologists, botanists, ecologists, mycologists, entomologists, marine scientists, together with enthusiastic community members, identified some 850 species. All told, the four May BioBlitzes and the November MycoBlitz have found nearly 2000 different non-human species in the district. Mark your calendars for BioBlitz 5 on June 12 and 13, and for MycoBlitz on November 6 and 7. These events are great ways to learn to appreciate the complex environment in which we live.

October will be a busy month for the Metchosin Foundation as we look forward to hosting the third annual Apple-Bee Fest on October 5 at the Community House. Last year hundreds of people, many of whom brought their own apples, enjoyed a range of fun activities including tasting, pressing, juicing, drying, baking and identification of many species. Tree care was not neglected,

as Derek Wulff gave a seminar on grafting as well as edifying all with his bee insights. Fiona Hammersly-Chambers of Metchosin Farm gave a highly entertaining talk on whether apples are really just using us to achieve Global Domination.

Come one, come all to the annual Halloween Dance at Metchosin Community Hall on Saturday night, October 27. The costumes and music are always great, so please come and celebrate with us at this event – our main annual fundraiser.

It looks like we’ll have a busy year as negotiations proceed about further conservation covenants in the area. Discussions are ongoing with key community leaders regarding the potential of establishing a combination education centre and bird observatory in the area.

If you would like to find out more about any of these activities, please drop by our Metchosin Day booth to hear the details firsthand, whether your interests are in healthy lands, healthy waters or a healthy caring community. We look forward to hearing from you.

For further information please go to our website: www.metchosinfoundation.ca

'CHOSIN POTTERY
Robin Hopper & Judi Dyelle
250-474-2676



4283 Metchosin Rd., Victoria
Weekends 10am - 5pm Weekdays call ahead
www.chosinpottery.ca

941 Arden Rd.
Victoria, BC. V9C 4G3
Home: (250) 474-7403
Cell: (250) 514-7339

KIVARI AUTO REPAIR
A modern approach to car care with good old-fashioned service.
Kevin Kivari
Certified mechanic/owner/operator
k_kivari@shaw.ca
www.kivaristudio.com



Stillpoint Therapies
Helen Peacock CHSIP, CCST
Cranial Sacral Therapy
Hellerwork Structural Integration

Myofascial release
Craniosacral rebalancing
Movement re-education

(250) 744-7927
helen-peacock@shaw.ca
www.hellerworkvictoria.com



Fire Smarting Your Home

STEPHANIE DUNLOP

**Emergency Preparedness Session:
Fire Smarting Your Home**
Tuesday, April 21, 7:00 pm at the Fire Hall

Many of you may remember the sudden increase in activity, panic and awareness of the fire hazard here in Metchosin during last year’s Mount Blinkhorn fire. We were all very lucky – one misplaced firebrand or ember and it could have been a whole different outcome. Would you have been ready?

We all realize in a situation like the firestorms of Kelowna in 2003, nothing could have prepared us for the wall of fire that took out hundreds of homes. That was a once-in-a-lifetime (hopefully) kind of fire.

Whether or not your home has a higher chance at surviving a forest fire will depend on you and the preventative measures you take to FireSmart your home.

Generally speaking, homes catch fire two ways in a forest fire situation: the first is when fire jumps from tree crown to tree crown and surrounds a home; the second is when small embers (firebrands) are carried in the wind and land in unsuspecting and unprotected homes. These embers can sit and burn for hours in small crevices, gutters full of tinder, or in between roof shingles – thereby starting the house on fire.

Firebrands can be carried up to two kilometres in the wind, starting numerous additional brush fires, tree fires, and structure fires – completely exhausting any firefighting resources available.

What can you do? So glad you asked! The following are simple steps you can take to reduce the risk of a firebrand or ember starting a fire on your property:

- Clean your roof and gutters – remove all dead moss, pine needles and leaves.
- Close your screens and vents – eliminate small crevices for embers to hide.

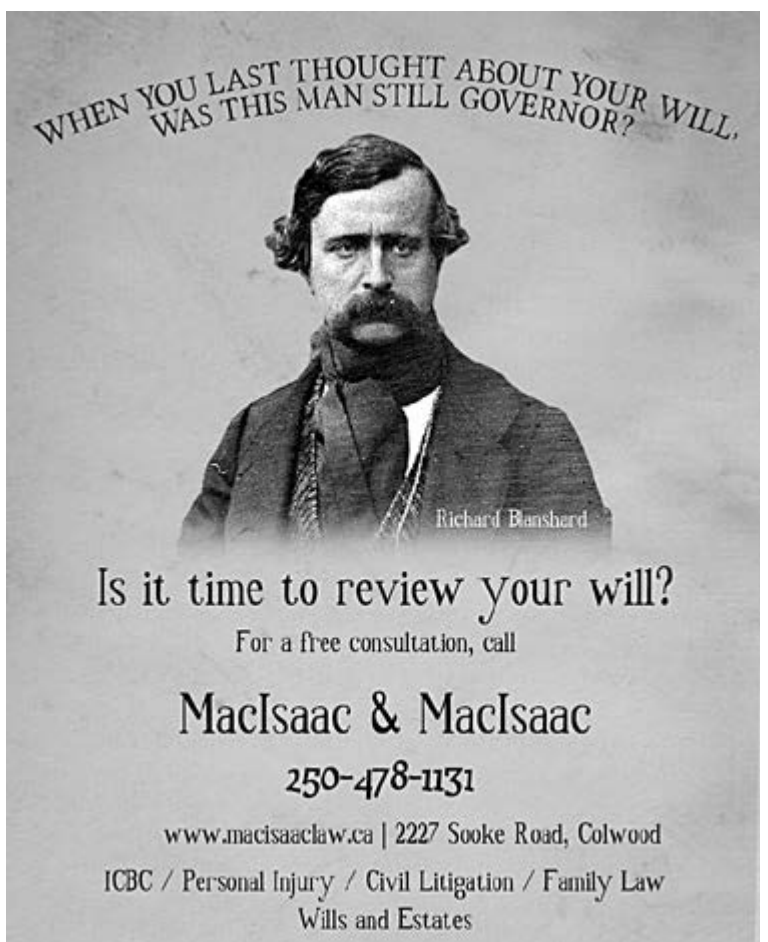
- Screen in your balcony, deck or porch – don’t forget crawl spaces and open areas underneath. Embers can be blown inside and start a fire.
- Move your wood pile to at least 20 feet (60 metres) from your primary residence
- If you are planting new shrubs and greenery – investigate alternatives such as FireSmart foliage.
- Remove abundant underbrush and ladder fuels in the surrounding forest area.
- Trim trees and branches that overhang your roofline.

Coming Soon to Metchosin:

The Metchosin Volunteer Firefighters Society, Metchosin Fire Department and Metchosin Emergency Program will be starting a new Sprinkler Protection Program. We are putting together custom size roof sprinkler kits which will be made available for purchase by homeowners, hopefully by the beginning of June this year. Firefighters and Emergency program volunteers will assess size and provide instruction on how to install. These sprinklers will run off your existing home water system. Sprinklers are used to thoroughly wet down an area, which results in combustibles (buildings and landscape) being much less likely to ignite due to flying embers and the intense heat of a nearby fire. The soaked landscape releases moisture into the air. This lowers the ambient temperature and increases the humidity level of the immediate area. Sprinklers are most effective when in continual operation for two or more hours prior to the arrival of the fire. However, any operational time, even as little as an hour, will increase chances of a successful defense of the property.

For more information on how to make your home FireSmart, please join us at our next Emergency Preparedness Session on Tuesday, April 21, 7:00 pm at the Fire Hall.

WHEN YOU LAST THOUGHT ABOUT YOUR WILL,
WAS THIS MAN STILL GOVERNOR?



Richard Blanshard

Is it time to review your will?
For a free consultation, call
MacIsaac & MacIsaac
250-478-1131
www.macisaaclaw.ca | 2227 Sooke Road, Colwood
ICBC / Personal Injury / Civil Litigation / Family Law
Wills and Estates

ADAMS TREE SERVICE
HIRE A LOCALLY OWNED METCHOSIN BUSINESS!

Proud to Call the Island our Home
www.treevictoria.com

24 HOUR emergency service

- Tree removal
- Stump grinding & removal
- Spiral thinning
- Hedge trimming & shaping
- Tree topping
- Fruit & ornamental pruning
- Lot clearing
- Excavating & Bobcat work

VISA MasterCard

Free estimates | 24 Hours **250-516-8315** Fully Insured | Since 2000

Metchosin's Aileen McConnell

JIM MACPHERSON



Aileen McConnell. Photo by Jim MacPherson

A life of accomplishment: that's how we can describe Metchosin's Aileen McConnell.

You might say it was fate that brought her here. Her first ambition was to become a veterinarian, but she was born in Belfast, Northern Ireland and her headmistress said, concerning her plan to be a veterinarian, "... but no lady ever does that!" So, Aileen went into medicine where, in Northern Ireland, 40% of the students were women. Graduating from Queen's University in Belfast in 1955, Aileen was one of 60 graduates, of whom 40 emigrated to Canada and the United States within two years. There was little for them in Ireland because those with an interest in medicine who had served in the armed forces during the Second World War had had an accelerated university program, and were holding most of the post-graduate hospital positions. Aileen had a post graduate diploma in obstetrics, had run her father's practice when he was ill, but after consulting with classmates in Canada she applied to positions in Montreal and Kingston.

Choosing Montreal in 1958, she began a residency in internal medicine at the Montreal General Hospital.

There she met Fleming, a radiologist who had just returned from advanced specialization in Sweden. In due course, they married, and practised and taught at Montreal General Hospital and McGill University.

1965 meant relocation to Edmonton where Fleming had accepted a position as Head of Radiology in the University of Alberta Hospital. Edmonton was a bit of a culture shock after Montreal. In Northern Ireland and the Montreal General Hospital, women were accepted readily in medicine; Edmonton was not quite there yet.

Aileen became Secretary of the Internal Medicine Test Committee of the R.S. McLaughlin Examination and Research Centre, which was associated with the University of Alberta Department of Medicine. Here, introduced to computers, she helped to develop standardized practices, procedures and tests to permit doctors to move from one jurisdiction to another and continued practising. She remained with RSMERC for 19 years, and during that time, Aileen was also able to begin a lifelong dream and wish – to ride horses. She began with her first horse at a well-known stable in Edmonton where Canadian champion show jumpers and their horses trained. It was also home to the Canadian Cutting Horse Championship team which travelled to perform for the Queen and the Duke of Edinburgh, so she was having both English and Western lessons. She showed her first horse, won some ribbons, and was completely hooked. During those 25 years in Edmonton Aileen took two-week spring and fall equestrian training clinics in Calgary (both Western and English) for several years. In Edmonton, under the watchful eye of the late internationally

acclaimed Western and English trainer Bill Collins, she continued with two more horses and taught beginner classes at the same stable.

Also during those years, Premier Peter Lougheed was actively encouraging relations between Alberta and China. There were some 400 post-graduate Chinese students at the University of Alberta, and sister city associations developed between Edmonton and Harbin (legislative capital cities) as well as Calgary and Daquin (oil cities). Aileen was Program Chair of the Edmonton-Harbin Friendship Association for ten years. These Canada-China ties were solidified during several visits to China. She and Fleming were part of the first Canadian cycling tour to China. They also took a McGill Asia Pacific Studies three-month term at two separate universities in China.

In 1978 Fleming moved to take over the Radiology Department in the Wetaskiwin General Hospital. Aileen and an equestrian friend selected a 120-acre piece of land where they decided to start an equestrian operation which became Nearaway Farm, a riding, boarding and training facility for horses. With an 11-horse barn, outdoor and indoor riding arenas, hay pastures, woodland and lakeside trails, a self-designed modular home and trailer home, it was a very complete working setup.

While in the Wetaskiwin area, Aileen's interest in substance abuse led to her position as Medical Director of the Wetaskiwin Care Unit, an in-patient Treatment Program begun as a pilot project of the US-based group. This program involved intervention with addicts while they were still functioning. This was a complete change from the Government of Alberta's addiction policy at that time. The Wetaskiwin Care Unit was an approximately 15 day in-patient program. It was a very busy and stimulating working place with a wide variety of patients – a high school student and school principal, bank manager, operating room nurse, First Nation person, and a farm grandmother whose family wanted to take her to New Zealand sober.

The success of that pilot project opened some doors to rethinking addiction treatment and led to the development of workplace intervention programs to treat people much earlier than before.

Fleming retired in 1989, and they moved to Metchosin in August 1990. Aileen did not feel that the stable business could be moved. That decision to relocate to Vancouver Island meant relinquishing the equestrian operation, a difficult and sad time, as it had been a very worthwhile 12 years for horses, riders and Aileen's riding ventures at home and on the show circuits.



Aileen at the July 2011 Sheep Dog Trials in Metchosin. Photo by Lorraine Buchanan

In September that year Aileen went to the Duncan Fair to see a sheepdog demonstration. She had brought one Border Collie with her from Alberta. John Buchanan had lent them some sheep to see if they would like to have sheep on the new Pears Road home. The die was cast and the rest is history. Having been advised that North Country Cheviots were the preferred breed for training successful working sheepdogs, Aileen approached Pat Hoole, who at that time had one of the best flocks in North America. His champions were in the Maritimes, Oregon and California. She asked him for 12 bred ewes! He was a bit surprised, but, having trialled himself in earlier years, he agreed to help. A new sheep barn was built and 12 very expectant ewes moved to the second Nearaway two months ahead of lambing in March, 1992. Aileen's obstetric skills came in useful. At the same time, other groundwork was being prepared. With invaluable support from the Buchanans, Doug and Gretta Ruth, Martha McHardy, and others from beyond Metchosin, the first Metchosin Sheepdog Trial took place off Taylor Road in July 1992. Another Border Collie, Skye, came from Alberta. She and Aileen travelled to Washington and Oregon trials. It was easier to travel with two, three or four dogs than even one horse! Over the next ten to twelve years managing the sheep at home and trialling replaced the stable and horses. In due course she became president of the Canadian Border Collie Association and helped organize sheepdog trials in Metchosin from 1992 to 2012.

But there were some other challenging interests. Shortly after arriving in Metchosin, Aileen and Fleming visited the neighbours at Pearson College of the Pacific. At that time there were no students from China amongst the 200 students from more than 80 countries. Given their previous experiences both in Alberta and China, and Pearson

College being "of the Pacific," in discussions with the College staff it became obvious that something needed to change. The Chinese Consul General in Vancouver, An Wen Bin, a very senior diplomat, came to visit Pearson College. He agreed to help. Using Victoria's Sister City relationship with Suzhou, and working with the departments of Foreign Affairs and Education in Suzhou, contacts were established and in September 1992 the first student from Suzhou High School arrived at Pearson College. Since then, more than 20 students from Suzhou have come to Pearson College and 40 others have studied at other UWC Colleges around the world. Aileen visited China several times, selecting students for these opportunities, and has welcomed students and some parents to her home as host mother/parent and friend. These connections still carry on to this day. One more very interesting happening: Aileen hopes to attend the Official Opening of China's first United World College in September, 2015. The site is within the Greater Suzhou Municipality.

Still active and in good health, Aileen is an Honorary Life Member of the Canada China Friendship Association, Patron of the Art Gallery of Greater Victoria, a board member of the Victoria Suzhou Sister City Association, and a member of the Creative Peace Mural Society. In Metchosin she has served on the Metchosin Agriculture Advisory Select Committee and as former Chair of the Healthy Communities Advisory Select Committee, and is on the board of The Metchosin Foundation. She continues to live on the family farm with Border Collie "Chance." They are back working sheep at another sheep farm, and have been trialling again. A move to Victoria is in process.

Aileen McConnell – yet another reminder of Metchosin's uniqueness.

10 years
of serving the
West Shore!



BY THE WAVE

HOME & GARDEN CLEANING SERVICES

Call now for a FREE estimate!

WestShore Chamber of Commerce member

- Housekeeping
- Exterior Cleaning
- Grass Cutting
- Yard Maintenance
- Junk Removal
- ... & More

Mark and Lisa
250-217-6128

Email: bythewave@msn.com



West-Mont Montessori

Pre-School to Grade 8 Programs

Pre-School Spaces
Available



West-Mont Montessori School

4075 Metchosin Rd, Victoria t: 250.474.2626 e: info@west-mont.ca w: west-mont.ca

The Swans of Albert Head Lagoon

A PHOTO ESSAY BY FRED NEVEAUX



The end of February was quiet on the Lagoon. The resident pair of Mute Swans grazed the bottom for aquatic plants and awaited the coming of spring. This is the third pair of swans residing here in the past 30 years.



As March approaches, the hen will start building her nest on the shore. It takes her up to five years to mature and learn to place the nest above the highest high tide level. In the next few years she will hatch two or three cygnets which normally do not survive due to predation and the parents' ignorance in protecting the young.

Last year she hatched five cygnets of which three survived and flew off to seek mates at Royal Roads Lagoon. This year was a bumper crop with six cygnets hatching and surviving to adulthood.



Mating for life, they protect their food source from all invaders including other swans, Canada geese and ducks. Being so large, with a wing span of over two metres, their only enemies are dogs and man. When young, this also includes eagles, river otters and raccoons.



The first week after hatching the cygnets stay close to the nest. They are fed aquatic plants pulled from the lagoon bottom by the adults. After teaching the young how to oil their downy feathers, the family moves farther afield to teach feeding techniques in the shallows, methods of washing, and preening. Experienced parents now keep them close by to prevent predation.

As the summer passes, the cygnets lose their down, which is replaced by dull grey feathers, and the survival lessons continue.



With the arrival of fall, the grey feathers are slowly replaced by the adult white feathers and flight training starts. With short hops of twenty or thirty metres, their flying ability slowly increases so that at the end of four weeks they are able to maintain extended flight times.




The annual bird migration will soon occur and the cob and hen will expend their energy racing across the lagoon in pursuit of the invaders. Pulling tail feathers or using the spur on the wings, they quickly drive out the unwanted.

The parents start with short flights out over the ocean until finally they are able to fly over to the next lagoon. Here they are introduced to dozens of other swans with the hope that they will find a mate and not return to their place of birth. This year, two cygnets stayed behind while the other four returned with the parents. Tolerating this situation for about six weeks the parents finally gave up and drove them out by pulling tail feathers and beating them with their wings.



It is spring in Metchosin and the cycle starts again.



PACIFIC COAST CREMATION
— low cost cremation & burial —

3212 Jacklin Road, Victoria, BC • 250-483-2558

Cremation from \$1,295 +tax

3 WAYS TO ARRANGE OR PRE-PLAN

- At our office
- At your residence
- Online and Save \$50

PacificCoastCremation.com






Photo by Brian Domney

Consider the Lilies XIII

ISABEL TIPTON

Consider the Lilies XIII
 April 11–19: 10:00 am–4:00 pm; *except Sundays:* Sunday, April 12, 12:00–4:30 pm, and Sunday, April 19, 12:00–4:00 pm at the heritage St. Mary’s Anglican Church, 4354 Metchosin Road

Fibres and Beyond is a diverse group of women whose ages span five decades.

They have continued to meet and show together for 13 years. A love of the tactile, the textures and the

colourful possibilities of creating with fibre, is the thread that stitches the group together. Friendships have grown as life stories unfold for each member. The group has been a constant in each other’s lives, offering support in times of sorrow and delight in times of celebration, providing inspiration and encouragement as they show each other the latest project or completed piece. The artwork and expression has changed over the 13 years. For some it has been a progression and is recognizable as the same artist’s work. For others, the

transformation leaves one wondering whose piece it is. The show will include wall pieces, garments and art dolls, a beautiful variety of artwork utilizing many techniques.

We invite you to Consider the Lilies XIII, April 11–19 at the heritage St. Mary’s Anglican Church.

The beautiful wild lilies will greet you in the churchyard, and their vibrant namesakes look forward to chatting with you at the art show inside.

We encourage you to come and enjoy our show.

Looking Over Our Shoulders at Success

BARB SAWATSKY

Last Rough Voice Choir of the season (until September)
 Monday, April 13, 7:00–9:00 pm at the Community House

Sometimes success comes in baby steps and sometimes it arrives in leaps and bounds. Looking over our shoulders at January, 2014 when the Rough Voice Singers met for our first sing-along, we can see the giant footsteps behind us. From humble beginnings of 20 people sharing ten printed songbooks (made up for the anticipated ten singers), our numbers have grown to an average of 35 people each night reaching a high of 45 at Christmas. From one pianist, we now have four, plus two guitars, a ukulele, a harpsichord and an accordion PLUS karaoke and lead singers and no more song books. Thanks to Anne Richmond who dragged us into the 21st century, we now project words onto the TV screen through the computer. No longer are we only singing favourite old camp songs but we have different theme nights each time we meet: folk and blues, musical and show tunes, country and western, spirituals and for April Fools Day, a fun variety of silly songs.

If you have ever toyed with the idea of coming

down to the Community House to join us but are either shy or have told yourself that you cannot sing, then listen up: everyone – EVERYONE – is invited to a free evening of song and camaraderie on our final night of the season (until September) on Monday, April 13 from 7:00–9:00 pm. The theme for the evening is “Favourites” – favourites from the past year and favourites of the musicians. Following an hour and a half of rousing song, there will be free (that word again) food and noisy, friendly mingling. (An aside: when Laura Farquharson learned that we only had two Rough Voice evenings ahead of us, she said, “but what will I do every second Monday if I don’t go to choir?”)

Come down. Be a voice. Sing it out. And, oh yes: you shy people who say to yourselves, “but I can’t sing”? It just doesn’t matter. It’s so loud in the House on Rough Voice night that NO one can hear himself sing. “Himself”: yes, we have way more than one male singer. And they all sound like Pavarotti – especially on country and western night. Hahaha.

Tell them you saw it in the *Muse!*



Opening May 29, 2015 in Metchosin, we are seeking both emerging and established artists who would like to display their work during the grand opening.

The opening of Windrush is in support of YouthSpace.ca, providing mental health support to the youth of Greater Victoria.

Your questions and comments are welcome. Please call or email Cathy.

Cathy@windrushgallery.ca

250-580-5673

4357 Metchosin Road

youthspace.ca



Saturday
 April 25
 7:00 pm

10th Annual
**Don Chrysler
 Concerto
 Competition**
 for Young Musicians

Phillip T. Young Recital Hall
 University of Victoria
 FREE - Donations appreciated

Info: 250-419-3569 / 250-642-5760
 sookephil.ca | facebook.com/sookephilharmonic

Get on the Band Wagon!

BARB SAWATSKY

Can you believe it? Beginning on Friday, April 24 something new is coming to Metchosin in the way of monthly entertainment. Affordable date nights will soon be a reality in our community! This new, local entertainment venue promises to be lively and popular.

Metchosin Golf Course has agreed to open the club house to visiting bands on the third Friday of each month. Although there is no admission charge, a suggested donation

of \$5/person is requested; all money collected will go to the entertainers.

Maureen, one of the original organizers of the Rough Voice Singers, tells me that she and Carol have been going to coffee houses around the Victoria area and approaching musicians who would be a good fit for Metchosin audiences. Fine Spirits, Metchosin's very own Dave and Lesley Preston's band, kicks off the series on April 24 along with Sue

Hansen, followed on May 15 by Group Therapy, "an eclectic quartet consisting of two lovely songbirds and a couple of crows," then on June 19, Bijou de Bayou, a lively Zydeco/Cajun band will play. Maureen stresses that this is not open mic entertainment; bands have been approached and invited to play.

On Band Wagon nights, food can be ordered from 6:00–8:00 pm, music will play from 7:00–9:00 pm and the bar will be open for the evening. There are so many advantages to this idea: the golf course will benefit from food and drink sales, Metchosinites (and others) will benefit because there will be a new venue in our community – a welcoming place for Victoria-area entertainers to play their music, one where we can have

dinner with a glass of wine or beer, listen to great music and if the spirit moves, dance, because the size of the club house will permit all of this.

The Band Wagon is a brilliant idea, something Maureen has dreamed of and worked towards for a long time. Now that entertainment is lined up, Shannon at the golf course has

enthusiastically agreed to open the club house as the venue, and posters have been printed, we can all benefit from the effort it has taken to make this dream come true.

Check out the website at <http://metchosinbandwagon.shawwebpace.ca> and please feel free to email Maureen with questions or suggestions: lizzieg@shaw.ca



HOUSE HAPPENINGS

Metchosin Community House 4430 Happy Valley Road Info: 250-478-5155
Email: mcahouse@telus.net Web: www.metchosincommunityhouse.com

Ongoing Programs

Monday

Vancouver Island Health Authority Adult Day Program – 9:00 am–3:30 pm. Contact Mobile program coordinator Ken Hillicke at 250-213-2440.

Pearson College Students Outreach – 3:00–4:30 pm. Helping seniors and youth in our community. Invite Pearson College students to visit or help with a project. Particularly aimed at Metchosin seniors, but call 250-478-5155 and leave a message for Jane Hammond or John Hollemans, to see if you might be eligible.

Knitting Café. On the first and third Mondays monthly, 7:00–9:00 pm, knitters of all skill levels, including beginners, are welcome to this informal and friendly get-together. For information call Laura, 250-478-1197, email laura.farquharson@shaw.ca.

Singalong – Metchosin Rough Voice Choir – The Rough Voice Choir meets at the Community House on the second and fourth Monday, September to April, from 7:00–9:00 pm. All are welcome to join us at this fun, drop-in sing-along group where a "good singing voice" is not a requirement. \$3/person; \$5/family. Contact Barb at 250-478-0553, email barbsawatsky@hotmail.com.

Tuesday

Drop-In Painters Art Group. This friendly and supportive group of artists and hobbyists meets Tuesday mornings, 9:30 am–noon at the MCH. Everyone is welcome.

Knitting Café. On the second and fourth Tuesdays monthly, the Knitting Café has afternoon sessions from 1:00–3:00 pm. See the Monday listing for contact information.

Games Afternoon. Every third Tuesday of each month from 1:00–3:00 pm. Bring a game of your choice, bring a friend and a snack if so inclined and prepare to have some fun. Everyone is welcome.

Wednesday

Vancouver Island Health Authority Adult Day Program – 9:00 am–3:30 pm (see Monday for details).

Garden Club Meetings – 7:00–10:00 pm – Metchosin Garden Club. Our enthusiastic and informative club features a guest speaker on relevant garden topics on the first Wednesday of every month (except July, August, December, January) at 7:30 pm. Membership is \$10/year or \$2 for drop-in visitors. Jeff de Jong is our speaker on April 1. For more information call Suze Bowen (250-298-7877) or email suzebowen@shaw.ca.

Thursday

Creative Rug Hooking – First and third Thursdays, 10:30 am–1:30 pm, led by Sheila Stewart, certified Instructor of Traditional Rug Hooking. Beginners are welcome, but should contact Sheila (phone 250-595-6406, or email her at blueheronstudio@telus.net) to discuss needed supplies. Experienced rug hookers are invited to bring their own projects. Bring a bag lunch; tea and coffee available. No fees but donation jar available to cover refreshment costs.

Community Potluck Lunch – Last Thursday of each month, 12:00–1:30 pm. *All welcome!*

Friday

Parent and Tot Program – 9:30–11:30 am. Calling all Metchosin tots! The Parent and Tot Drop-In program invites moms, dads, caregivers and their young children to join us Friday mornings for our community Parent and Tot program. Children will enjoy our new toys, books and craft opportunities. Parents will enjoy our relaxed, supportive environment, parent resource library and opportunities to connect with other parents and kids. We look forward to seeing you and your little ones. For more information please call Nina at 250-590-2540 or email dalenina@shaw.ca

Pearson Student Teatime Drop-In – 2:45–4:30 pm. Enjoy a cup of tea and conversation with international students from Pearson College. No drop-in on April 3.

Film Night – *The Future of Energy* (79 minutes). April 24, 7:00–9:00 pm, Metchosin Community House. This amazing, inspirational film will be facilitated by Larissa Stendie of the Sierra Club. She is on tour, promoting this film to towns throughout the province. (Lucky us!) *The Future of Energy* shows the initiatives that people are taking to right things, what everyday people are doing to help foster this ballooning energy shift, and how they are reimagining their relationship with the planet and with each other. The film truly shows the positive work of thousands to drive this third industrial revolution. World environmental thinkers Bill McKibbin, Joanna Macey, and others speak about capturing the movement of transitioning to renewable energies. We will see how entire towns have achieved net-zero energy consumption. In a time when we are consuming vast amounts of energy, how is that possible? Come see. Suggestions, comments, please contact Ric at ricnic2@shaw.ca

Events

Guest Speaker Series – Maurice Robinson: Paragliding in BC, France, Italy and Mexico. Thursday, April 16, 7:00–9:00 pm. High-flying seniors, Bev Hall and Maurice Robinson, took up paragliding six years ago when they had already qualified for their Old Age Pensions, and have been launching themselves off peaks in various countries ever since. Although when approached about doing a guest speaker presentation, Maurice said "no one will want to hear about two old farts paragliding," you are assured of a fascinating evening with slides and video of their adventures and their "never too late to try something new" attitude.

Garden Club – CRD Micro/Drip Irrigation Workshop. Saturday, April 25, 2:00–5:00 pm. Considering the purchase and installation of an irrigation system, or do you already own a system that you would like to upgrade? CRD Environmental Services is hosting an irrigation workshop for residential homeowners. Irrigation experts will explain system components, discuss installation and provide scheduling and maintenance tips. Space is limited and by donation. **Pre-registration is required.** Please call 250-474-9684 to pre-register.

Mighty Garage Sale – May 23 and May 24. Donations start May 16. More to come!

Foot Care Program – The last Monday of each month a foot care nurse offers foot care services. Appointments are half an hour and cost \$40. Appointments are between 10:00 am and 2:30 pm. Please call 250-478-5155 to book.

The Art On The Walls Program offers the House as a wonderful venue for artists to show and display their works. For more information, please call the MCH at 250-478-5155.

Life in Metchosin 2

SUBMITTED BY BARB SAWATSKY

Answers on page 14.



Complete Bobcat, Trucking & Mini Excavating Services

4604 Morland Road, Metchosin, B.C. V9C 3X4
Locally owned & operated since 1984

Free Estimates 250-478-2980

- Custom low maintenance landscapes
- Boulder walls and rockeries
- Selective land clearing • Rockhound
- Concrete/rock breaker • Stump & brush removal
- Driveways/R.V. parking • Culverts • Drains
- Top soil, bark mulch, sand and gravel

CONTRACT OR HOURLY RATES

MILLAR'S AUTOMOTIVE Volkswagen Specialist



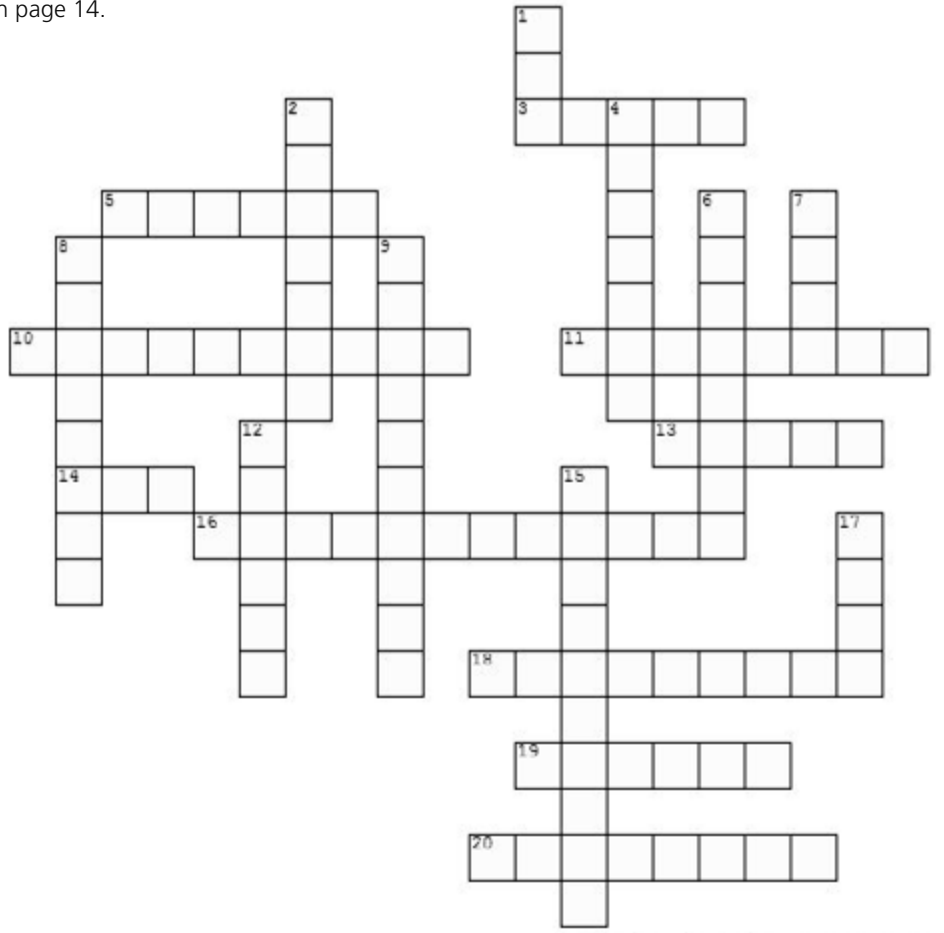
4199 Stillmeadow Road
Metchosin, BC V9C 4H8
(Off Witty Beach Road)

Al Millar

Tel: (250) 391-0588

Fax: (250) 391-0587

Check out the classified ads on page 15!



Created on TheTeachersCorner.net Crossword Mak

Across

- _____ the cradle
- as in flies or vegetable
- thorny subject
- woody woodpecker
- drone's name for queen?
- gives a hoot
- hops through Metchosin
- high cholesterol flower?
- handit quadruped
- hot flowers

Down

- old (and perhaps sticky) sailor
- buck's response to doe
- chesty blrd
- flaming trees
- grime in the garden
- nudlist beach sight
- found in swamps and barns
- through the woods and over dales
- they sprout up around Christmas season
- God's beach gift to compost

ISLAND SOLES... SHOP LOCAL. LACE UP LOCAL.



Come in and get professionally fitted.

We have the largest selection of walking and running shoes on Vancouver Island! We stock shoes from extra narrow to extra wide and sizes 5 to 17.

FRONTRUNNERS

VICTORIA 1200 Vancouver St. T 250-382-8181

LANGFORD 123-755 Goldstream Ave T 250-391-7373

www.frontrunners.ca



Tell them you saw it in the *Muse*!

What Is It?

In Metchosin, it's not unusual to come across something a little different. With its history and diverse population, this is a great place to find uniqueness, whether person, place, or thing.

The *Muse* hopes to pull some of these treasures out of Metchosin's closet for your enjoyment. If you can identify the item featured below, send an email to the editor at metmuse@shaw.ca. The sender of the first email received that correctly identifies the person, place, or thing will receive a free regular coffee, compliments of the Broken Paddle Coffee House. We'll let them know to expect you!



Photo by Barb Sawatsky

Nobody offered any correct guesses on the location of the "robust" arbutus tree featured in the February *Muse*. If you'd like to see it for yourself, take a hike around Matheson Lake, and keep your eyes peeled!

sponsored by **The Broken Paddle Coffee House**
4480 Happy Valley Road, Metchosin

MCA SPEAKER SERIES

High-Flying Seniors, Bev Hall and Maurice Robinson: Paragliding in France, Italy, Mexico, and BC

MCA Speaker Series, Thursday, April 16, 7:00 pm at the Metchosin Community House

Like the daring young man in the old British music hall song, Bev and Maurice “fly through the air with the greatest of ease” but on paragliders rather than on a trapeze! And while they are “mature” rather than “young” they certainly qualify as “daring.” Since taking up the sport six years ago when they had already qualified for their Old Age Pensions, they have launched themselves from peaks in France, Italy and Mexico, as well as in BC.

Back in the 1970s, when riding the ski lift at Lake Louise, Maurice saw a skier attach himself to a colourful parachute and take off from the snowy slope. Maurice was much impressed, but it wasn't until he and Bev were on holiday in New Zealand in 2006

that he had the opportunity to try paragliding himself. He loved the experience so much, he was able to persuade Bev to take up the sport too.

Bev, who received the Metchosin “Friend of the Earth Award” in 2014, claims to have trouble with coordination – although if you see her photographs you would know there is no lack of it between eyes, brain, and camera. She also has a fear of heights! Nevertheless, she and Maurice signed up for lessons in 2009. Bev says her greatest difficulty was mastering the take-off. When preparing for their presentation she learned that Maurice had taken an amusing video of one of her poor attempts to become airborne, and they will be showing this along with slides.

Maurice describes paragliding as an activity which “humans can do in three dimensions – and most of life is in two.” When asked to give this talk he commented that no one would be interested in hearing about “two old farts doing paragliding,” but I can assure you that from talking to Bev and Maurice, I know it will be a fascinating evening. Paragliding is a sport which they describe as “always keeping you on edge and aware all the time” mixed with the wonder of flying like a bird!

All welcome. Free, including refreshments – and tips on paragliding.

– Laura Farquharson, MCA Guest Speaker Coordinator



Above: Bev and Maurice near Lumby, BC. Photo by Jason Biggins

Left: Bev, guide Irwyn Jehu, and Maurice, in France. Photo by Hazel Griffins

Come “hang out” with Bev and Maurice at the Community House on April 16!

All phases of excavating and trucking.
Logging • Stump removal • Riding rings
Operator of Metchosin's local rock quarry –
The Marcotte Pit

- Crushed road base & driveway materials
- Boulders for rock walls, blast rock, & fill

Insured, quality work, free estimates
Local Resident since 1964

Dennis Josephson
663 Lombard Dr.

Cel: 250-589-0192
Home: 250-478-0192



DEAN STRAITH Landscape Design



Excavation,
trucking and
tractor services.
Slate, flagstone,
sand, gravel
and soil.
Water features.
Garden design.
Deer-proof nursery.

250-589-6599
sam@straiths.com

Project and Property management.

OVER 30 YEARS OF SERVICE ON THE SOUTH ISLAND.

IS YOUR CURRENT MORTGAGE RATE TOO HIGH? Take advantage of the historically low rates now available.

Getting into a lower interest rate can potentially save you thousands of dollars. Give me a call to discuss your options.



- Shop dozens of lenders in the time it takes you to book an appointment with your bank.
- Refinance/Renew/Purchase/Consolidate

Appointments can be arranged in Metchosin.

Sandy Higgins, Accredited Mortgage Professional, MBABC, CAAMP
Office: 250-658-9315 • Cell: 250-589-9244
Fax: 250-658-9316
Email: sandyhiggins@telus.net
www.sandyhiggins.ca



The Mortgage Centre

Sandy works for you, not the lenders.

The Mortgage Centre – Island Properties
New address: 890 Short Street, Victoria BC V8X 2V5
www.ipmortgages.ca

KNOW YOUR RISK FOR HEART DISEASE!

Are your heart and arteries in good shape?
How would you know?

Let me screen them for you using a Health Canada approved device - takes a few minutes and is pain free - **\$45.00**

BOOK YOUR APPOINTMENT IN METCHOSIN TODAY!
250.391.9948

Brian Crombleholme - Doctor Certified Technician
www.cardioscreens.com ♥ brian@cardioscreens.com

Best of the Muse

Volume 2 is available now at the Metchosin Country Store.

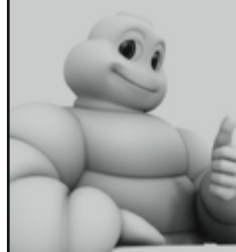
WESTCOAST TIRE and WHEEL Ltd.

since 1980

Nitrogen
Force Variance
Balancing

HOURS:
Mon.-Fri: 9am - 6pm
Sat: 9am - 5pm

250-889-6161
or
250-642-4044



4730 SOOKE RD. • VICTORIA • 15 mins from Colwood Corners
www.westcoasttires.com

NEWS FROM WEST-MONT SCHOOL

West-Mont in the Community



Luke Pierce, grade 6 student at West-Mont Montessori School, volunteers at My-Chosen Café as part of a life-skills program. He works hard cleaning tables and chairs, vacuuming, and washing windows. Jessica Lejeune photo.

West-Mont Montessori School Welcomes Special Guests

NANCY HARYETT



Esther Mwale talking to the Upper Grades (4-6) class at West-Mont.

presentation that detailed the planning, construction and implementation of the program. Esther Mwale, a former graduate of the school in Malawi and current Pearson College student, shared photos and told stories about growing up in Malawi. West-Mont students had the opportunity to ask questions and compare life in Malawi to life in Victoria. Esther explained that a particular highlight of her Canadian experience has been living among the beautiful tall trees at Pearson College. She hopes to become a doctor some day and return to Malawi to help others.

For more information about APU, please visit www.malawigirlsonthefly.com.

Improve Reading and Learning

Does your child have difficulty with reading or learning? Help them succeed with our fun and effective reading programs.



One in ten children has reading difficulties that often go unnoticed or unaddressed. You can help your child succeed at school. Our programs are scientifically proven to bring slow readers up to speed.

Not sure if your child has a reading problem? Contact us for a free assessment.

Marlene Lewis, MA, RSLP
Registered Speech-Language Pathologist
www.access-speech-language.com

250-474-6368 or mmlewis@shaw.ca

West-Mont Montessori School in Metchosin is currently sponsoring a student through Atsikana Pa Ulendo (APU), an organization dedicated to providing an education to girls from rural areas of Malawi who, due to lack of financial support, would be unable to continue with their education beyond primary school. Funds raised on West-Mont

“twoonie” days throughout the year are donated to this program and will provide tuition for Ucleaner Kaputalambwe, a 15-year old girl, to attend school.

Recently, students and staff at West-Mont School welcomed two very special visitors. Christie Johnson, co-founder of the APU school in Malawi, shared a slide

Shop Locally

And tell them you saw it in the *Muse!*

Fire Dept. Call-Outs

FEBRUARY 16-MARCH 15, 2015

FIRE CHIEF STEPHANIE DUNLOP

Check out Metchosin Fire on Facebook or follow me on Twitter @ ChiefDunlop

- | | |
|--|--|
| Feb 19 ALBERT HEAD ROAD – Alarm Bells – Commercial | Mar 05 ARDEN ROAD – Medical |
| METCHOSIN ROAD – Medical | LINDHOLM ROAD – Medical |
| Feb 21 WINDOVER TERRACE – Medical | WILLIAM HEAD ROAD – Medical |
| WINFALL ROAD – Medical | Mar 07 BARROW ROAD – Medical |
| WILLIAM HEAD ROAD – Assistance – General Public | GILBERT DRIVE – Medical |
| Feb 22 CLAPHAM DRIVE – Medical | LA BONNE ROAD – Brush/Grass – Smoke Smell / Sighting |
| PEDDER BAY – HAZ MAT – Propane | Mar 08 PEARS ROAD – Open Burn – General |
| WEDGEWOOD PLACE – Medical | Mar 09 CHARLES ROAD – Medical |
| ROCKY POINT ROAD – Open Burn – General | Mar 11 HAPPY VALLEY ROAD – Open Burn – General |
| CHARLES ROAD – Medical | Mar 13 KASANI PLACE – Medical |
| ROCKY POINT ROAD – Open Burn – General | Mar 14 WINTER ROAD – Open Burn – General |
| Feb 23 PEARS ROAD – Assistance – General Public | Mar 15 ROCKY POINT ROAD – MVI |
| Feb 24 ROCKY POINT ROAD – Medical | NEILD ROAD – Hydro – Fire |
| Feb 25 ROCKY POINT ROAD – Medical | |
| Feb 26 HAPPY VALLEY ROAD – Medical | |
| Feb 28 WILLIAM HEAD ROAD – Assistance – Misc Complaint | |
| FERNCLIFFE PLACE – Open Burn – General | |
| BENNETT ROAD – Open Burn – General | |
| NEILD ROAD – Open Burn – Camp Fire | |
| HAPPY VALLEY ROAD – Medical | |
| Mar 02 EAST SOOKE ROAD – Medical | |
| CHARLES ROAD – Medical | |
| Mar 03 LOMAX ROAD – Medical | |

Answers to crossword puzzle on page 12:

- | | |
|-------------------|----------------|
| ACROSS | DOWN |
| 3. ROBIN | 1. TAR |
| 5. SQUASH | 2. YESDEER |
| 10. BLACKBERRY | 4. BUSHTIT |
| 11. PILEATED | 6. FIREWOOD |
| 13. HONEY | 7. DIRT |
| 14. OWL | 8. FULLMOON |
| 16. KANGAROO ROAD | 9. HORSETAILS |
| 18. BUTTERCUP | 12. TRAILS |
| 19. RACON | 15. CRAFTFAIRS |
| 20. FIREWEED | 17. KELP |

METCHOSIN Country STORE

Fishing licenses • Phone cards • Movie rentals • Galloping Goose sausage • Locally made meat and fruit pies • Bakery items • Fresh produce and cut flowers • Hardware and Grocery • Prepared sandwiches • Fresh brewed coffee • You need it, we have it!

OPEN

Monday to Friday - 6:30 am to 9:00 pm
Saturday - 8:00 am to 9:30 pm
Sunday - 8:00 am to 9:00 pm

VISA, Mastercard, Interac

Phone & Fax: 250-478-2405

RCMP Call-Outs FEBRUARY 15–MARCH 14, 2015

BY CPL. BRIAN KERR, CENTRAL SAANICH POLICE

- Feb 15 **Sooke Road** – Complaint of erratic driver, vehicle not located, registered owner given warning.
Duke Road – Assistance provided to Parks Canada.
- Feb 17 **Glen Forest Way area** – Complaint of harassment, one person given verbal warning.
Kangaroo Road area – Complaint of person acting erratically, one person taken to hospital.
Metchosin Road – One person arrested on traffic stop for outstanding Criminal Code warrant.
Park Drive – Complaint of possible theft of firewood.
- Feb 18 **William Head Road** – Complaint of person acting erratically, one person spoken to.
Rocky Point Road – Complaint of possible disturbance.
- Feb 19 **Metchosin Road** – Complaint of drunken person falling down, taken to hospital.
Rocky Point Road area – Complaint of possible disturbance, unfounded.
- Feb 20 **Rocky Point Road** – Complaint of person in distress, taken to hospital.
Kangaroo Road area – Complaint of person with injuries, taken to hospital.
- Feb 21 **Rocky Point Road** – Complaint of possible disturbance.
- Feb 23 **Rocky Point Road area** – Complaint of theft of an ATV, still under investigation.
Sooke Road – Complaint of erratic driver, vehicle found to have flat tire, assistance provided.
William Head Road area – Complaint of suspicious male, one person spoken to.
Happy Valley Road area – Complaint of person breaching court order, one person arrested and held for court. Still under investigation.
- Feb 24 **Sandgate Road** – Complaint of suspicious male.
Rocky Point Road – Complaint of possible breach of peace.
Sooke Road – Complaint of possible impaired driver, vehicle not located.
- Feb 25 **Rocky Point Road** – Complaint of suspicious vehicle, vehicle stopped and driver found to be impaired by drugs, vehicle towed.
Chapel Heights Drive – Complaint of theft from vehicle during the night, several items stolen.
Graceland Drive – Complaint of theft from shed during the night.
Cactus Place – Complaint of theft from vehicle during the night.
Graceland Drive – Complaint of theft from garage during the night, several items stolen.
Cactus Place – Complaint of theft from garage during the night, items stolen.
All these events are still under investigation.
- Feb 26 **Happy Valley Road** – Complaint of erratic driver, vehicle not located.
- Feb 27 **Gemini Drive** – Complaint of shed being broken into and items stolen during the night.

In the many years of doing this article for the *Muse* this has been by far the busiest month for reported crimes. We all need to take a proactive approach in preventing these crimes.

- Remember to lock your residence both when at home at night and when you are away.
- Remember to lock your vehicles at night and not to leave valuables in them.
- Communicate with your neighbours about suspicious activity.

Cpl. Brian Kerr, Central Saanich Police

- Pegasus Way** – Complaint of damage to private property during the night.
- Pegasus Way** – Complaint of theft from vehicle/shed during the night, items stolen.
- Pegasus Way** – Complaint of theft from vehicle during the night.
- Pegasus Way** – Complaint of shed being broken into during the night, nothing stolen.
- Gemini Drive** – Complaint of shed being broken into during the night, items stolen.
- Pegasus Way** – Complaint of shed being broken into during the night, items stolen.
- Pegasus Way** – Complaint of three buildings being broken into during the night, items stolen.
- Pegasus Way** – Complaint of theft of a vehicle during the night, vehicle has not been located.
- Gemini Drive** – Complaint of residence being broken into, several items stolen.
- Sandgate Road** – Complaint of logging truck stuck in the ditch, later removed.
- Tiswilde Drive** – Complaint of gun shots being heard, patrols failed to locate anything.
- Feb 28 **Graceland Drive** – Complaint of theft from vehicle.
Rocky Point Road – Complaint of deer being hit by a vehicle.
Happy Valley Road – Complaint of a male under the influence of drugs, taken to hospital.
- Mar 1 **Cactus Place** – Complaint of attempt theft from a garage.
Pegasus Way – Complaint of suspicious persons, still under investigation.
- Mar 2 **Happy Valley Road** – Complaint of possible threats. Still under investigation.
- Mar 3 **Rocky Point Road area** – Complaint of lost/stolen license plate.
Neff Road – Complaint of possible fraud with credit card, still under investigation.
- Mar 4 **Sooke Road** – Complaint of erratic driver, vehicle not located.
William Head Road – Two complaints of a suspicious male.
Kangaroo Road – Complaint of abandoned vehicle.
Neild Road – Complaint of theft of gas, still under investigation.
- Mar 5 **Rocky Point Road** – Complaint of speeding vehicles.
Happy Valley Road – Complaint of a deer being hit by a vehicle.
William Head Road – Complaint of suspicious occurrence.
- Mar 6 **Kangaroo Road** – Complaint of suspicious vehicle, not located.
- Mar 7 **Duke Road** – Complaint of two vehicle collision, no injuries. Vehicles towed from scene.
Duke Road E – Complaint of theft/lost license plate.
- Mar 8 **Arden Road** – Complaint of single vehicle accident, no injuries, and vehicle towed.
Happy Valley Road – Complaint of vehicle hit and run, suspect vehicle stopped in Langford, driver charged under the *Motor Vehicle Act*.
- Mar 9 **La Bonne Road** – Complaint of residential break in during the night with people in the house, suspect chased from the residence but not located. Home owner chased one suspect who then shot at the home owner with an air soft type firearm. Investigation continuing.
Jelinek Place – Complaint of two vehicles being broken into during the night, several items stolen.
Jelinek Place – Complaint of two vehicles broken into during the night, several items stolen.
Jelinek Place – Complaint of found property in the morning, property found to be from a stolen vehicle during the night.
Jelinek Place – Complaint of four vehicles being broken into during the night and a shop entered, several items stolen.
Jelinek Place – Complaint of two vehicles being broken into during the night along with a garage entered.
- Mar 10 **William Head Road** – Complaint of person on private property, no one located.
Aquarius Road – Complaint of possible prowler, no one located.
- Mar 10 **Kangaroo Road** – Complaint of threats to a person, still under investigation.
- Mar 12 **Deer Park Trail** – Complaint of suspicious male selling pictures of properties taken by a drone.
- Mar 13 **Kangaroo Road area** – Assistance provided to the Coroner's office.
Kangaroo Road – Complaint of theft of items from a residence, reported for information.
Sooke Road – Complaint of theft from a road side egg stand, money stolen.
- Mar 14 **Happy Valley Road** – Complaint of possible impaired driver, driver not located.
Lomax Road – Complaint of suspicious vehicles, vehicle stopped and occupants spoken to.

CLASSIFIEDS

\$10 per 25 words to go in this monthly paper which is mailed to every Metchosin household. Envelopes for submissions and payments are provided at Metchosin Country Store.

Deadline for submissions is the 15th of each month and can be dropped off at Metchosin Country Store.

WANTED

COOKIES CRITTER CARE is collecting beverage containers, dog food, leashes, collars and toys for animal rescue. Call Cookie @ 250-415-9335 for pickup.

FOR LEASE

WATERFRONT ORCHARD HOME – Sell apples, etc. for farm taxes. Spacious 60s home, 5 bedrooms, pool, 2.5 acres. Expressions of interest to lease welcomed. Contact londak@hotmail.com

LESSONS

FOODSAFE – LEVELS 1 AND 2, MARKETSAFE AND WHMIS – Classes taught by certified instructors. See website www.hospitalitytrainingplus.com for information or contact Evelyn for on-site group classes. Call 250-474-5596.

SERVICES

COOKIES CRITTER CARE – Metchosin's Professional Pet-Sitter and Dog-Walker since 2006. Fully Insured, Bondable and First Aid Certified. Cookie 250-415-9335. Comes Highly Recommended and Recognized.

STUDENT MASSAGE THERAPIST looking to practice relaxation massage techniques on volunteers. Good for stress, headaches and muscle tension. Contact Mike at 250-896-4523.

Best of the Muse

Volume 2 is available now at the Metchosin Country Store.

RACE ROCKS AUTOMOTIVE

Repairs to All Makes & Models
Full Service Automotive Repairs

Rick Petillon - Certified Mechanic, 20 yrs exp.

- Warranty Approved Scheduled Maintenance
- Computer Diagnostics
- Brakes, Steering & Suspension
- Engine Mechanical
- Clutch & Axles
- Pre-purchase Inspection
- Designated Inspection Facility



Phone: 250-478-1920

1057B Marwood Avenue
Hours: Mon-Fri 8:00-5:30
We accept Visa, MasterCard & Interac

Events

Easter Events at St. Mary of the Incarnation
Sunday, March 29: Palm Sunday Procession, 9:00 am, St. Mary of the Incarnation
Tuesday, March 31: Communion, 10:00 am, St. Mary of the Incarnation
Thursday, April 2: Seder Supper, 6:30 pm, St. Mary of the Incarnation
Saturday, April 4: The Great Vigil, 8:00 pm, Christ Church Cathedral, Victoria
Sunday, April 5: Easter Sunday Sunrise Service, 5:30 am; call to confirm at 250-474-4119. Communion, 9:00 am, St. Mary of the Incarnation

CRD Events in Metchosin: Tall Trees – Guided Walk–5 years+; April 11, 1:00–3:00 pm. Meet at Devonian Regional Park.
The Healing Land – Guided Walk–18 years+; Apr 18, 1:00–2:30 pm. Meet at Witty’s Lagoon Regional Park.
Micro/Drip Irrigation Workshop – April 25; see House Happenings, p. 11.

The Victoria Natural History Society has ongoing events. See www.vicnhs.bc.ca for information.

For more on events of interest to Metchosinites, see “Important Dates,” page 1.

Directory of Organizations

The following is contact information for not-for-profit organizations, but fuller descriptions are given in the “Directory of Metchosin,” available at the Municipal Hall and the Community House. Brief articles highlighting special events should be mailed to metmuse@shaw.ca by the 15th of each month, as should any amendments or additions to this list.

- AIR CADETS**
250-590-3690
- ALZHEIMER SOCIETY OF BC**
250-382-2052,
www.alzheimerbc.org
- ASSOCIATION FOR THE PROTECTION OF RURAL METCHOSIN (APRM)**
250-478-1197, www.aprm.ca
- BADMINTON**
Women’s 250-478-9648
- BILSTON WATERSHED HABITAT PROTECTION ASSOCIATION**
250-478-2387,
ikmcken@islandnet.com,
www.bilstoncreek.org
- CHOSIN CHATTERS TOASTMASTERS**
info@chosinchatters.org,
www.chosinchatters.org
- CRD PARKS**
250-478-3344,
crdparks@crd.bc.ca,
www.crd.bc.ca/parks
- GIRL GUIDES OF CANADA (Metchosin and Colwood)**
tandwcampanandcomish@shaw.ca,
250-478-5484
- LA LECHE LEAGUE CANADA**
250-727-4384
- METCHOSIN 4H**
250-478-4677
Metchosin4H@gmail.com,
www.metchosin4h.com
- METCHOSIN COMMUNITY HOUSE**
250-478-5155,
mcahouse@telus.net,
www.metchosincommunityhouse.com
- METCHOSIN COUNCIL**
250-474-3167,
mayorandcouncil@metchosin.ca,
www.district.metchosin.bc.ca/meetings
- METCHOSIN EMERGENCY PREPAREDNESS**
250-478-1307, ham operators call in on 146.550. POD members can call FRS (Family Radio Service) radios: Channel 1 with “0” privacy tone

- METCHOSIN EQUESTRIAN SOCIETY**
250-391-7511,
exchanging@shaw.ca,
www.mesmetchosin.org
- METCHOSIN FOUNDATION**
metchosinfoundation@gmail.com,
<http://metchosinfoundation.ca>
- METCHOSIN GARDEN CLUB**
250-298-7877
- METCHOSIN HALL SOCIETY**
250-478-6424,
<http://metchosinhall.com/>
- METCHOSIN HIKING CLUB**
250-478-4778
- METCHOSIN MUSEUM SOCIETY**
Pioneer Museum, 250-382-1989,
School Museum, 250-478-5447
- METCHOSIN PONY CLUB**
250-727-3595
- METCHOSIN PRESCHOOL**
250-478-9241,
metchosinpreschool@gmail.com,
www.metchosinpreschool.wordpress.com
- METCHOSIN SEARCH & RESCUE**
250-478-2210
- MT. MATHESON CONSERVATION SOCIETY**
250-642-0238
- POD LEADERS**
250-474-6145,
mgidney@shaw.ca
- ROUGH VOICE SINGERS**
September to April
250-478-0553
- ROYAL CANADIAN LEGION Branch 91, Station Rd, Langford**
Ladies Auxiliary
250-478-5484
- SCOUTS CANADA**
14thjuandefuca@victoriascouts.ca
- SEA CADETS**
250-478-7813
- SENIORS’ INFORMATION RESOURCE CENTRE (SIRC)**
250-478-5150, msirc@shaw.ca

- TOPS: Take Off Pounds Sensibly**
Brian 250-474-1665
Marni 250-999-6757
- SWANWICK CENTRE**
A centre for spiritual inquiry
538 Swanwick Road
250-744-3354
programs@swanwickcentre.ca
www.swanwickcentre.ca
- WEST SHORE ARTS COUNCIL**
250-478-2286,
info@westshorearts.org,
www.westshorearts.org
- WEST SHORE COMMUNITY BAND**
250-474-3999
- WEST SHORE PARKS AND RECREATION**
250-478-8384,
www.westshorerecreation.ca

CHURCHES

- BAHA’I FAITH**
250-514-1757
- GORDON UNITED CHURCH**
250-478-6632
www.gordonunitedchurch.ca
- HOLY TRINITY REFORMED EPISCOPAL CHURCH**
250-727-3722
- OPEN GATE CHURCH**
250-590-6736
www.theopengate.ca
- ST MARYS’ METCHOSIN**
Anglican Church of Canada
250-474-4119
stmarysmetchosin.ca
- WESTSIDE BIBLE CHURCH**
www.westsidefamily.org
250-478-8066
- WESTSONG COMMUNITY CHURCH OF THE SALVATION ARMY**
250-474-5967
www.westsong.ca



My-Chosen Cafe

Come in and experience our quaint country atmosphere and enjoy our hearty portions of great home cooked foods!

OPEN: Mon.- Fri. 10am-9pm, Sat. & Sun. 8am-9pm

250-474-2333
Corner of Happy Valley and Metchosin Road

MY-CHOSEN PIZZA
Pickup after noon, delivery after 4pm
OPEN: Mon.-Wed. 3-9pm, Thurs.-Sun. 11am-9pm
Phone 250-474-5576



TIMBER HAWK HOMEBUILDERS LTD.

CUSTOM HOMES
RENOVATIONS
CARPENTRY
DESIGN
GENERAL CONTRACTING


(250) 888-9645
TIMBERHAWK@GMAIL.COM

ANGUS STEWART
CHRIS FRANG
METCHOSIN OWNERS



ENERGY STAR QUALIFIED BUILDERS





Juan de Fuca VETERINARY CLINIC

- Full hospital facilities
- Dentistry
- Dietary management
- On-site laboratory, examinations & surgery
- Extended hours

John Basterfield, DVM
Margaret Cairns, DVM
John Gayfer, DVM

250-478-0422
EMERGENCY 250-386-8422
2244 Sooke Rd.,
Hatley Park Plaza

CAN DO!

Quality High Speed
Colour Copies
Blueprints • Typesetting
Rubber Stamps
Laminating
Business Cards
Public Fax Service

MONDAY TO FRIDAY:
8:00 am–5:30 pm
SATURDAY:
10:00 am–5:00 pm

250-478-5533
2811 Jacklin Rd.
(near Goldstream)

SINCE 1988



The above is a directory of organizations only. Please submit changes to this information to metmuse@shaw.ca. Individuals, groups and organizations are invited to submit details on upcoming events, to be included under “Events” on this page. Deadline for submission is, as always, the 15th of the month preceding the issue date.

Tell them you saw it in the *Muse!*